

HILLSDALE **H** COLLEGE

MEN'S BASKETBALL 2006-2007



MEDIA GUIDE



2006-07 Hillsdale College Men's Basketball



34 - Senior Jason Weaver



10 - Senior Drew Powell

| | |
|--------------------------------------------------|--------------------|
| Table of Contents | inside front cover |
| General information | 3 |
| GLIAC Preseason Poll | 4 |
| 2006-07 Season Preview | 5 |
| Ed Douma bio | 6 |
| Assistant Coaches | 7 |
| Support Staff | 8 |
| Numerical and alphabetical rosters | 9 |
| Meet the players | 10 |
| Evan Steward | 11 |
| Drew Powell | 12 |
| Tim Homan | 13 |
| Travis Worst | 14 |
| John Farr | 15 |
| Jason Weaver | 16 |
| Tony Gugino | 17 |
| First-year players | 18 |
| Historical figures | 19 |
| Career records | 20 |
| Career records | 21 |
| Single-game records | 22 |
| Coaching records | 23 |
| 2005-06 GLIAC honors | 24 |
| 2005-06 GLIAC standings | 25 |
| 2005-06 GLIAC leaders | 26 |
| 2005-06 GLIAC leaders | 27 |
| 2005-06 GLIAC award history | 28 |
| Hillsdale College president Dr. Larry Arnn | 29 |
| Hillsdale College campus map | 30 |
| Finding your way to Hillsdale | 31 |
| 2006-07 Men's Basketball Schedule | 32 |

2006-07 Hillsdale College Men's Basketball

GENERAL

Name of school Hillsdale College
 City/Zip Hillsdale, MI 49242
 Founded 1844
 Enrollment 1,200
 Nickname Chargers
 School Colors Royal Blue & White
 Arena Jesse Philips Arena
 Capacity 2,500
 Affiliation NCAA II
 Conference GLIAC
 President Dr. Larry Arn
 Alma Mater, Yr. Arkansas State / 1974
 Athletics Director Dr. Michael Kovalchik
 Alma Mater Eastern Illinois
 Athletic Dept. Phone (517) 437-7364
 Head Trainer David Frisby
 Training Room Phone (517) 607-3193
 E-Mail david.frisby@hillsdale.edu
 Assistant Trainer Darcie Stechschulte
 E-mail darcie.stechschulte@hillsdale.edu

SPORTS INFORMATION

Director of Sports Information Brad Monastiere
 SID Office Phone (517) 607-3172
 Home Phone (517) 437-3191
 Cell Phone (517) 425-1786
 E-Mail Address brad.monastiere@hillsdale.edu
 SID Fax (517) 607-3120
 SID Mailing Address 201 Oak St.
 Hillsdale, MI 49242
 Overnight Address Same
 Web Address www.hillsdale.edu/chargers

COACHING STAFF

Head Coach Ed Douma
 Alma mater / Year Calvin College / 1966
 Record at School/Years 127-96/8 Yrs.
 Career Record/Years 546-284/31 Yrs.
 Office Phone (517) 607-3135
 E-Mail ed.douma@hillsdale.edu
 Best Time of day to reach Mornings
 Assistant Coach Brooks Miller
 Office Phone (517) 607-3151
 E-mail brooks.miller@hillsdale.edu

TEAM INFORMATION

Overall 2005-06 Record 12-16
 Conference Record/Finish 7-10, 4th South Division
 Final Ranking Last Year N/A
 Starters Returning/Lost 3/2
 Letterwinners Returning/Lost 7/5

MEDIA INFORMATION

Radio Station WCSR (92.1 FM)
 Contact Person Mike Flynn
 Address 170 N. West St.
 Hillsdale, MI 49242
 Phone (517) 437-4444
 FAX (517) 437-7461
 Newspaper Hillsdale Daily News
 Contact Person Rich McGowan
 Address 33 McCollum St.
 Hillsdale, MI 49242
 Phone (517) 437-6022
 FAX (517) 437-3963

Credits: Written and designed by Sports Information Director Brad Monastiere. Editing assistance by SID Intern Andy Lovell. Cover designed by Katie Botsis. Player action photos by Mark Rogers and Doug Coon.

On the Cover: Returning players for the 2006-07 Chargers.



Jeff Ligney
Director of Media Relations

1110 Washington Ave.
 Bay City, MI 48708
 Voice: (989) 894-2529 Fax: (989) 894-2825
 E-mail: jligney@gliac.org
 web site: www.gliac.org/mens/basketball/

November 7, 2006
 For immediate release

GLIAC Men's Basketball Coaches Choose Grand Valley State and Findlay for 2006-07 Division Titles

BAY CITY, Mich. -- The head men's basketball coaches of the Great Lakes Intercollegiate Athletic Conference (GLIAC) chose Grand Valley State University and the University of Findlay to win the league's North and South Division titles, respectively.

Grand Valley State, the 2006 GLIAC Champion, was a unanimous first-place selection, receiving all six of the first-place votes it was eligible for, tallying 36 points. Ferris State University finished second in the poll with 27 points. The Bulldogs fell to GVSU in last season's GLIAC title game. Michigan Technological University garnered the remaining first-place nod and finished third in the poll with 26 points. Northern Michigan University placed fourth in the rankings with 23 points. Saginaw Valley State University (17 points), Lake Superior State University (11), and Northwood University (6) round out the North Division poll.

Findlay was also unanimously voted first, receiving all five of the South Division first-place votes it was eligible for. Ashland University earned the remaining first-place nod to finish second in the Division with 17 points. Mercyhurst College narrowly edged out Wayne State University for third place. The Lakers tallied 13 total points to the Warriors' 12. Hillsdale College (10 points), and Gannon University (6) placed fifth, and sixth, respectively.

Each of the GLIAC's 13 coaches ranked the teams in the division in which they play, but were not allowed to vote for their own team. The first-place team on the North Division ballot received six points, while the second-place team received five points, etc. The first-place team in the South Division received five points, while the second-place team received four points, etc.

The 2006-07 GLIAC tournament quarterfinal games will be played on Tuesday, Feb. 27, on campus sites with the higher seeds hosting the games. The semifinals and finals will be hosted by the highest remaining seed on Friday, Mar. 2 and Saturday, Mar. 3.

GLIAC basketball teams open play on Wednesday, Nov. 15 with conference play beginning Wednesday, Nov. 29.

2006-07 GLIAC Preseason Men's Basketball Coaches Poll

| <i>North Division</i> | | |
|-----------------------|-----------------------------------|---------------|
| <i>Rank</i> | <i>School (first-place votes)</i> | <i>Points</i> |
| 1. | Grand Valley State (6) | 36 |
| 2. | Ferris State | 27 |
| 3. | Michigan Tech (1) | 26 |
| 4. | Northern Michigan | 23 |
| 5. | Saginaw Valley State | 17 |
| 6. | Lake Superior State | 11 |
| 7. | Northwood | 6 |
| <i>South Division</i> | | |
| 1. | Findlay (5) | 25 |
| 2. | Ashland (1) | 17 |
| 3. | Mercyhurst | 13 |
| 4. | Wayne State | 12 |
| 5. | Hillsdale | 10 |
| 6. | Gannon | 6 |

2005-06 GLIAC Men's Basketball Final Standings

| <i>North Division</i> | |
|----------------------------|-----------------------|
| <i>School</i> | <i>Record (GLIAC)</i> |
| Grand Valley State | 27-4 (16-2) |
| Ferris State | 18-13 (13-5) |
| Northern Michigan | 17-11 (13-5) |
| Michigan Tech | 14-14 (10-8) |
| Saginaw Valley State | 9-18 (4-14) |
| Lake Superior State | 6-21 (3-15) |
| Northwood | 7-20 (2-16) |
| <i>South Division</i> | |
| Findlay | 25-5 (15-2) |
| Ashland | 19-10 (10-7) |
| Mercyhurst | 19-9 (9-8) |
| Hillsdale | 12-16 (7-10) |
| Gannon | 12-15 (6-11) |
| Wayne State | 11-14 (6-11) |

2006-07 Hillsdale College Men's Basketball

Youthful Chargers to rely on athleticism, toughness in new season

The 2005-06 Hillsdale College men's basketball season can be clearly defined by two separate halves.

In the first half, the Chargers ripped off a six-game winning streak and held first place in the GLIAC South Division with a 4-0 record through early December. The second half was not as successful, as the team finished with a 7-10 conference mark and 12-16 overall.

The beginning of that tailspin came when the team lost its two starting forwards, John Farr and Tim Homan, to injuries that knocked them out of a big portion of the middle of the season. Both players contributed much to the team's success, with field goal percentages better than 50 percent and excellent rebounding skills; areas that suffered in their absence.

The shooting and rebounding inconsistencies that plagued the team last year should be considerably improved this season with the return to health of Farr and Homan, in addition to the talented newcomers that have joined the team.

The 2006-07 Chargers have just three seniors on the roster, but the coaching staff is excited about this team's athleticism and toughness.

Leading the way will be senior guard **Drew Powell** (Belmont, Mich.). Powell has the most playing experience of any senior on the roster, and will be counted on for scoring, rebounding and bringing the ball up the court.

Center **John Farr** (Marietta, Ohio) suffered an injury last season and missed the meat of the team's schedule. When healthy, Farr adds power, size and determination to the team's front court. All of those elements were missed by the Chargers when he was sidelined.

Fellow senior **Jason Weaver** (White Pigeon, Mich.) registered career-highs in nearly every category last season and showed much improvement in the post.

It has not been uncommon for young players to play big roles on recent Charger teams, and the vast experience gained by junior forward **Tim Homan** (Celina, Ohio) should serve to make him an even more dangerous player in 2006-07. One of the team's most accurate shooters and explosive athletes, Homan has a total offensive game, and has improved his ability to play against contact in the offseason.

Two of this year's sophomores made positive impacts on the team during their first active seasons with the team last year. Forward **Tony Gugino** (Holland, Mich.) was redshirted in 2004-05, but showed considerable skills in his first active season a year ago. Gugino was fourth in the GLIAC in blocked shots, and despite his 6-foot-9 frame, has skills that allow him to be effective on the perimeter.

Sophomore **Travis Worst** (Grand Rapids, Mich.) also had flashes of brilliance a year ago, including a game where he had five steals in one half vs. Gannon University. Worst never shies away from physical play and has gotten bigger and stronger in the offseason.

This year's freshman class has head coach Ed Douma very excited about the impact it can make this season. Ohio prep rivals **Andrew Taylor** (Toledo, Ohio) and **Kyle Brown** (Strongsville, Ohio) join forces in Charger blue this season. The two players faced each other in the Ohio state semifinals in March, but they both could now find themselves being handed starter-level minutes. Taylor is a 6-foot-7 forward who can get up and down the court in a hurr, while Brown plays bigger than his 6-foot-4 frame would indicate.

Point guard **Nick Jennings** (Dayton, Ohio) is lightning-quick and plays tough. He will be one of several first-year starting point guards throughout the GLIAC this season.



Two experienced seniors on this season's men's basketball team are Drew Powell (above) and Jason Weaver (below).



2006-07 Hillsdale College Men's Basketball

HEAD COACH ED DOUMA

Ed Douma heads into his ninth season as head coach at Hillsdale College and his 32nd season as a head coach overall.

Last season, the Chargers qualified for the GLIAC Tournament for the fifth consecutive season, and finished with a 12-16 mark. Douma will set a record when he coaches his first game this season. He will become the school's record-holder for longest consecutive coaching tenure, beginning his ninth season. Ron Halsted coached Hillsdale for 12 seasons, but in two different stints, spanning four and eight seasons. Douma is also second all-time in coaching victories at Hillsdale with 127, and his 223 games coached are second-most all-time at the school.



In 2002-03, Douma also achieved a career milestone by recording his 500th career coaching victory, following an 86-83 overtime win over Mercyhurst on February 8, 2003. In 2001-02 and 2000-01, he led the Chargers to back-to-back appearances in the NCAA Tournament, which was Hillsdale's first ever bid to the NAAs. Also in 2001-02, Douma led the Chargers to 23 wins and the GLIAC South Division crown, while earning the Sears/NABC Great Lakes Region and GLIAC Coach of the year honors. In 2000-01, Hillsdale's 13 wins in GLIAC play tied the school record set by the previous year's squad and the 1980-81 GLIAC Championship team.

Douma brings a tough, hard-nosed approach to the defensive end of the floor and a disciplined, yet exciting offensive style. His experience includes 28 years as a head coach at the collegiate level, including at his alma mater, Calvin College (NCAA-III). He has also coached at Alma College (NCAA-III), fellow GLIAC member Lake Superior State University (NAIA), Kent State University (NCAA-I), and the University of North Carolina-Greensboro (NCAA-III). Douma brings a career mark of 546 wins and 284 losses, making him one of the most accomplished coaches ever to head the Hillsdale program. His style has produced many winning campaigns with an average of 19 wins a season.

Winning has been a way of life in Douma-led basketball programs with his greatest success occurring in 1991-92 when he led the Calvin College Knights to the NCAA Division III National Championship, sporting a 31-1 record along the way. The 31 wins set Calvin College and Michigan Intercollegiate Athletic Association (MIAA) records for victories in a season. Douma was honored by the National Association of Basketball coaches as their NCAA III Coach of the Year. During his tenure at Calvin from 1984-1996, he posted 254 wins with 72 losses for a scorching .793 winning percentage. Douma's teams won six MIAA titles and earned nine NCAA post-season berths. Besides the national title, his squads gained entry to the quarterfinals twice and the semifinals once.

Douma began his coaching career at the high school level in Shelby, Michigan where he won two Class C state championships. He moved on to the college level at Alma College and led the Scots to a 13-8 mark during the 1973-74 season. Lake Superior State University was Douma's next destination where he headed up the Laker program from 1974-78, posting four straight winning seasons. The Lakers won two NAIA District 23 titles and qualified for the NAIA National Tournament. The 1975-76 squad won 26 games and advanced to the NAIA quarterfinals. His career mark at LSSU was 81 wins and 25 losses.

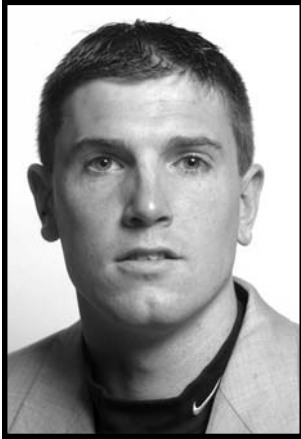
Douma next coached at NCAA Division I Kent State University, where he coached from 1978-82. In 1982, he moved on to UNC-Greensboro, an NCAA Division III team at that time. Before returning to Calvin College in 1984, he averaged 14 wins over two seasons at UNC-Greensboro before coaching an Athletes in Action team that toured South America. Douma is a native of Grand Rapids and Muskegon who earned his bachelor's degree at Calvin College, majoring in English. He also was a four-year varsity standout on the Knight basketball team.

Douma was inducted into the Basketball Coaches Association of Michigan Hall of Fame in October 1995, the Muskegon Area Sports Hall of Fame in June 1998 and the Lake Superior State College Hall of Fame in October 1998.

He resides in Hillsdale with his wife Carolyn, who is the director of instruction for the Avondale School District in Auburn Hills, Mich. They have two children: Greg, 25, and Rachelle, 23.



ASSISTANT COACHES



Brooks Miller - Assistant Coach

Brooks Miller is entering his third season as assistant coach for the Charger men's basketball program, after playing for the Chargers from 2001-2003. Miller spent the 2003-04 season as a substitute teacher and assistant varsity boys basketball coach at his alma mater, Evergreen High School, in Ohio.

Miller graduated from Hillsdale College in 2003 with a Physical Education degree. While at Hillsdale, he played three seasons for head coach Ed Douma earning the team's best defensive player award twice. He was also named to the Hillsdale Rotary Christmas Classic All-Tournament team twice and earned GLIAC All-Academic honors for two years.

At Evergreen High School, Miller was named First Team All-State in basketball and Second Team All-State in football.

He is also an Ohio High School Football Hall of Fame Foundation inductee. He resides in Hillsdale and is engaged to Gretchen Messenger, Assistant Director of Admissions at Hillsdale College.

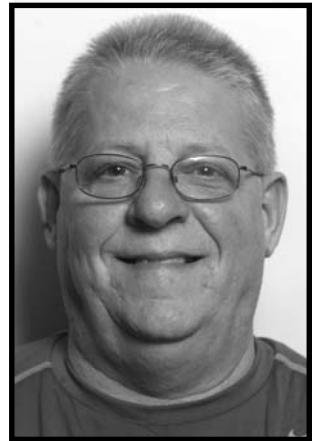


Assistant coaches Doug Williams and Brooks Miller enjoy a light moment on the bench last season.

Doug Williams - Assistant Coach

Veteran sidelines man Doug Williams joins the Hillsdale College men's basketball staff for the 2005-06 season, his first with the Chargers. Williams is a native of Archbold, Ohio, where he has coached basketball for more than two decades. He got his start in coaching at Continental High School, where he was an assistant for 11 years. He moved up to become the school's varsity head coach in 1992, where he enjoyed great success in a nine season run. Williams led his team to four sectional championships, two district titles and one conference championship, winning all three in the 1997-98 season. Williams moved on to Pandora High School in 2000 as an assistant, staying there until 2004. Williams spent the 2004-05 season as the head basketball coach at Hilltop High School in Ohio.

Williams graduated from Delta High School and earned his bachelor's degree in business administration from Bowling Green State University. Williams is married to Vicki, and they have four children: Tori (12), Cassidy (10), Bryce (7) and Jeron (6).



Daniel Williams - Director of Basketball Operations

Daniel Williams is entering his second season as the Director of Basketball Operations under head coach Ed Douma.

Williams, a junior pursuing a history degree, is in his third year on the team staff. His role encompasses the managerial oversight of all team equipment and uniforms; setting up and assisting with practices; supporting players in academic matters; organizing the film exchange program; and performing various other administrative and logistical duties.

Williams is also the photo editor of The Collegian, the Hillsdale College student newspaper. Williams is a native of Broken Arrow, Oklahoma.

2006-07 Hillsdale College Men's Basketball

CHARGER SUPPORT STAFF

Dr. Mike Kovalchik - Athletic Director

Dr. Mike Kovalchik is in his 10th year as Hillsdale College athletic director and chair of the department of physical education, with the academic rank of Professor. Prior to his tenure at Hillsdale College, Dr. Kovalchik was the director of athletics and chair of the department of physical education at Grand Valley State University from 1989 to 1996. Previous administrative stays included, Ohio Northern University, Jamestown College of North Dakota, Coe College of Iowa and Hanover College of Indiana.



Dr. Kovalchik holds a doctorate from Southern Illinois University at Carbondale, master's degrees from Eastern Illinois University, and State University of New York at Cortland, and the bachelor of science degree from Eastern Illinois University. A former two-sport athlete and minor league baseball player, he has coached football, wrestling and baseball throughout his collegiate career of 25 years.

Currently, Dr. Kovalchik is a member of the NCAA Division II Championships Committee and the Division II Project Team to Review Issues Related to Diversity. Previous NCAA committees include, the Division II Management Council, the Division II Legislation Committee and Chair of the Interpretations Subcommittee, and the Baseball Rules Committee. He is a former recipient of the prestigious Kellogg Foundation Grant, 1983 to 1985.

Dr. Kovalchik is a former U.S. Marine officer, U.S. Air Force officer and a Vietnam veteran. He is married to the former Sheila Wallace.

David Frisby (MSATC) Head Athletic Trainer

A new athletic training staff is in place for the 2006 season at Hillsdale College. But a familiar face on that staff is David Frisby, who was promoted to the position of Head Athletic Trainer in May 2006. He previously served as the assistant athletic trainer at Hillsdale for two years. He has more than 20 years of athletic training experience, including stints with area high schools, the University of Michigan, and the Cincinnati Reds baseball team.



Dave earned his bachelor's and master's degrees from Ohio University. Dave and his wife Jennifer reside in Hillsdale with their sons Hayden, Mitchell and Conner.

Darcie Stechschulte (MSATC) Assistant Athletic Trainer

Assisting Dave will be new assistant athletic trainer Darcie Stechschulte. Darcie was hired in July 2006 and will work with Dave on a wide range of athletic training issues covering all Hillsdale College varsity teams.



Darcie earned her bachelor's degree at Ohio State University, and earned her master's degree at Ohio University. Last year was the head athletic trainer at Tecumseh High School.

Brad Monastiere Sports Information Director

Brad Monastiere was hired as the Sports Information Director for Hillsdale College on June 6, 2005. He spent the first nine years of his post-college career working as a sportswriter for two different newspaper groups in Oakland County. Just before his appointment with the college, Brad was the Sports Editor of the Hillsdale Daily News for 18 months.

Brad is a 1996 graduate of Central Michigan University, with a degree in journalism. Some of his responsibilities as SID include maintaining the school's athletic website, statistics from all home games, and production of media guides and gameday programs.

Assisting Brad with home basketball games this season are student workers Megan Howard, Katie Botsis, Ashley Wolff, Amanda Robertson and Anna Leutheuser.

Secretarial Staff



*Jeanie Adams
Executive
Assistant to the
Athletic Director*



*Anita Gordon
Sports Complex
Secretary*



*Claudia Gillette
Business
Secretary*



THE 2006-07 CHARGERS

MEN'S BASKETBALL NUMERICAL ROSTER

| <u>No.</u> | <u>Name</u> | <u>Pos.</u> | <u>Yr.</u> | <u>Ht.</u> | <u>Wt.</u> | <u>Hometown</u> | <u>High School</u> |
|------------|------------------|-------------|------------|------------|------------|---------------------|-----------------------|
| 2 | Nick Jennings | G | Fr. | 5-9 | 160 | Dayton, Ohio | Stebbins |
| 4 | Joe Dunham | G | Sr. | 6-0 | 185 | Thompson, N.D. | Thompson |
| 5 | Evan Steward | G | So. | 6-0 | 160 | Mooresville, Ind. | Mooresville |
| 10 | Drew Powell | G | Sr. | 6-1 | 205 | Belmont, Mich. | Rockford |
| 21 | Tim Homan | F | Jr. | 6-4 | 200 | Celina, Ohio | Celina |
| 23 | Kyle Brown | F/G | Fr. | 6-4 | 215 | Strongsville, Ohio | Strongsville |
| 32 | Travis Worst | G | So. | 6-3 | 195 | Grand Rapids, Mich. | Forest Hills Northern |
| 33 | John Farr | F/C | Sr. | 6-8 | 230 | Marietta, Ohio | Marietta |
| 34 | Jason Weaver | F | Sr. | 6-7 | 238 | White Pigeon, Mich. | White Pigeon |
| 40 | Andrew Taylor | F | Fr. | 6-7 | 200 | Toledo, Ohio | St. John's |
| 42 | Tony Gugino | F/C | So. | 6-9 | 187 | Holland, Mich. | Holland Christian |
| 44 | Andrew Daugherty | F | Sr. | 6-4 | 215 | Hudson, Mich. | Hudson |

Head Coach: Ed Douma (9th season at Hillsdale, 31st overall)

Assistant Coach: Brooks Miller (3rd season)

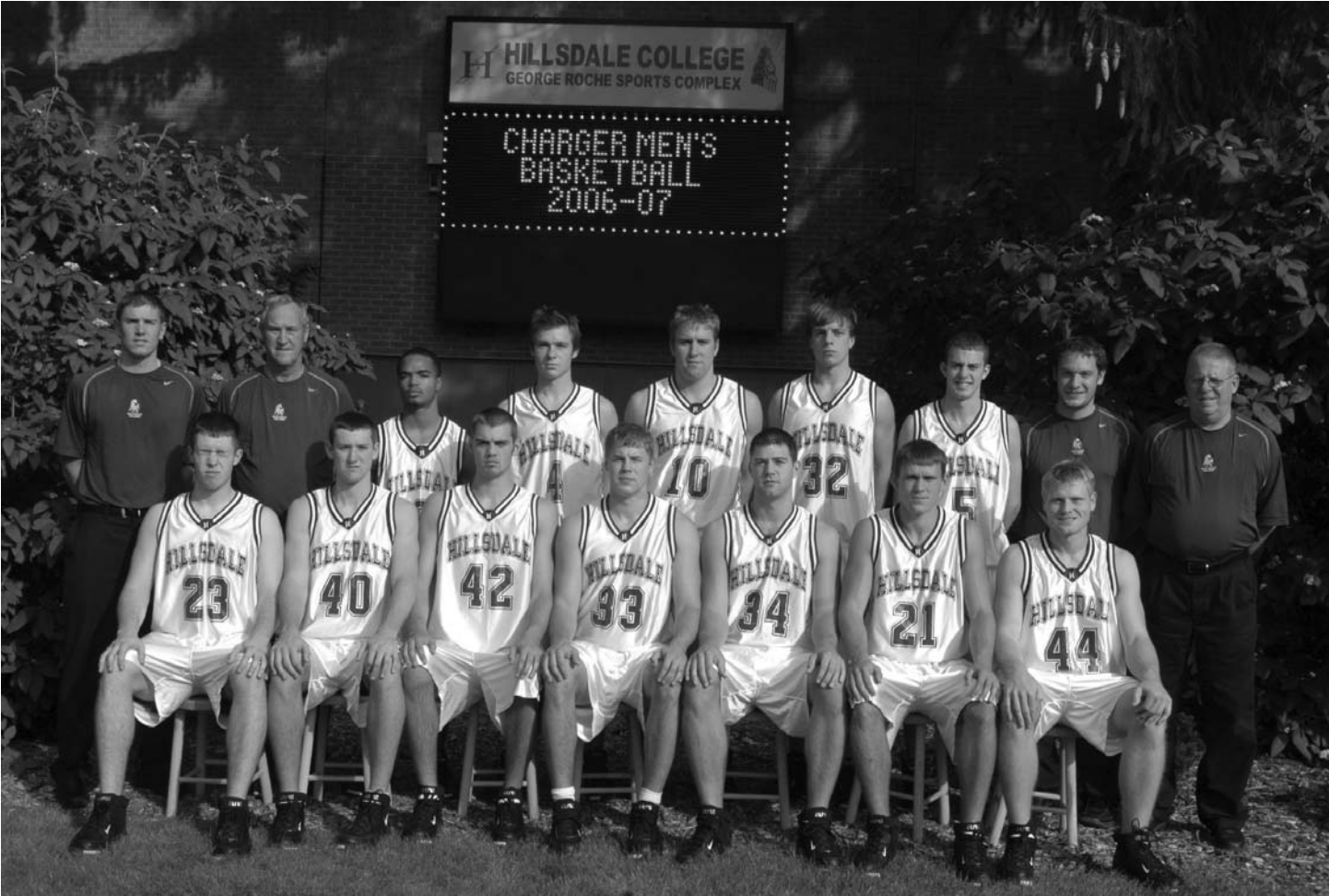
MEN'S BASKETBALL ALPHABETICAL ROSTER

| <u>No.</u> | <u>Name</u> | <u>Pos.</u> | <u>Yr.</u> | <u>Ht.</u> | <u>Wt.</u> | <u>Hometown</u> | <u>High School</u> |
|------------|------------------|-------------|------------|------------|------------|---------------------|-----------------------|
| 23 | Kyle Brown | F/G | Fr. | 6-4 | 215 | Strongsville, Ohio | Strongsville |
| 44 | Andrew Daugherty | F | Sr. | 6-4 | 215 | Hudson, Mich. | Hudson |
| 4 | Joe Dunham | G | Fr. | 6-0 | 185 | Thompson, N.D. | Thompson |
| 33 | John Farr | F/C | Sr. | 6-8 | 230 | Marietta, Ohio | Marietta |
| 42 | Tony Gugino | F/C | So. | 6-9 | 187 | Holland, Mich. | Holland Christian |
| 21 | Tim Homan | F | Jr. | 6-4 | 200 | Celina, Ohio | Celina |
| 2 | Nick Jennings | G | Fr. | 5-9 | 160 | Dayton, Ohio | Stebbins |
| 10 | Drew Powell | G | Sr. | 6-1 | 205 | Belmont, Mich. | Rockford |
| 5 | Evan Steward | G | So. | 6-0 | 160 | Mooresville, Ind. | Mooresville |
| 40 | Andrew Taylor | F | Fr. | 6-7 | 200 | Toledo, Ohio | St. John's |
| 34 | Jason Weaver | F | Sr. | 6-7 | 238 | White Pigeon, Mich. | White Pigeon |
| 32 | Travis Worst | G | So. | 6-3 | 195 | Grand Rapids, Mich. | Forest Hills Northern |

Head Coach: Ed Douma (9th season at Hillsdale, 31st overall)

Assistant Coach: Brooks Miller (3rd season)

2006-07 Hillsdale College Men's Basketball



MEET THE PLAYERS



2006-07 Hillsdale College Men's Basketball

#5 - Evan Steward

Sophomore □ Guard
 6 feet, 0 inches
 Mooresville, Ind.
 Mooresville
 High School



2005-06: Was steadily improving and getting more playing time until suffering an injury at Findlay Feb. 4...True gym rat who is very quick with the basketball...Played a season-high 13 minutes against Lake Superior State on Jan. 26...Also competes in the pole vault event for the Hillsdale College men's track team...**High School:** Named team MVP and was named First-Team All-Midstate Conference at Mooresville High School...Averaged 10 points and three assists per game as a senior, and shot 71 percent from the free throw line.

Evan's Career Highs



- Minutes:** 13 vs. Lake Superior State (1-26-06)
- Points:** 4 vs. Ashland (1-14-06)
- Rebounds:** 4 vs. Ashland (1-14-06)
- Assists:** 2 vs. Ashland (1-14-06)
- Field Goals:** 2 vs. U-M Dearborn (12-6-05)
- Field Goal Attempts:** 4 vs. U-M Dearborn (12-6-05)
- 3-point Field Goals:** none
- 3-point Field Goal Attempts:** 2 vs. U-M Dearborn (12-6-05)
- Free Throws:** 2 vs. Ashland (1-14-06)
- Free Throw Attempts:** 2 vs. Ashland (1-14-06)
- Steals:** 1 vs. Findlay (2-4-06)
- Blocks:** none

| | TOTAL | | | | 3-PT | | | | | | | | | | | | | | |
|--------------|-----------|----------|-----------|-------------|----------|----------|-------------|----------|----------|-------------|----------|----------|----------|------------|----------|----------|----------|----------|------------|
| | GP | FG | FGA | FG% | FG | FGA | FG% | FT | FIA | FT% | OR | DR | REB | RPG | AST | BLK | ST | PTS | PPG |
| 2005-06 | 11 | 5 | 14 | .357 | 1 | 5 | .200 | 5 | 8 | .625 | 5 | 4 | 9 | 0.8 | 4 | 0 | 2 | 7 | 0.6 |
| TOTAL | 11 | 5 | 14 | .357 | 1 | 5 | .200 | 5 | 8 | .625 | 5 | 4 | 9 | 0.8 | 4 | 0 | 2 | 7 | 0.6 |

2006-07 Hillsdale College Men's Basketball

#10 - Drew Powell



Senior □ Guard
6 feet, 2 inches
Belmont, Mich.
Rockford High School



2005-06: Enjoyed best season of career, setting new high marks in points, rebounds, steals, free throws made and field goals made...Scored a career-high 20 points in the season opener against Aquinas on Nov. 15...Made a career-high nine field goals in the game vs. Ferris State Jan. 7...Had four steals including one late to help clinch a win at Northwood on Feb. 20...Was held to single-digit scoring just seven out of 28 games on the season...Scored at least 10 points in 12 of the team's first 13 games...Had at least four assists 13 times during the season. **2004-05:** Made big strides in his game, that resulted in big increases in all statistics as well as earning a starting spot. Started every game, logging 30 or more minutes in 16 of the team's 28 games. Got off to a quick start to the season, scoring a total of 46 points in the team's first three games. Had a season-high 19 points against Grand Valley on Jan. 15. One of the more reliable free throw shooters on the team also, making 77 percent of his shots including four games where he was 4-for-4 from the line or better. Third on the team with his 10.8 points per game scoring average. **2003-04:** Started two games, but saw action in all 27, averaging 3.0 points per game. Scored a season-best 13 points vs. Wisconsin-Parkside Nov. 18. **High school:** Was the team captain of the 2002-03 Class A state championship basketball team from Rockford High School, under coach Steve Majerle. Named Third Team All-State and All-Conference after his senior season. Averaged 17 points, five rebounds and six assists per game for the Rams. Was born in Houston, Texas.

Drew's Career Highs



- Minutes:** 38 vs. Grand Valley (1-15-05)
- Points:** 20 vs. Aquinas (11-15-05)
- Rebounds:** 13 vs. Northwood (2-20-06)
- Assists:** 7 vs. Gannon (1-29-05)
- Field Goals:** 9 vs. Ferris State (1-7-06)
- Field Goal Attempts:** 20 vs. St. Francis (12-17-05)
- 3-point Field Goals:** 3 vs. Wisc.-Parkside (11-15-04)
- 3-point Field Goal Attempts:** 8 vs. Ashland (2-2-06)
- Free Throws:** 8 vs. Aquinas (11-15-05)
- Free Throw Attempts:** 10 vs. Aquinas (11-15-05)
- Steals:** 4 vs. Northwood (2-20-06)
- Blocks:** 2 vs. Lake Superior State (1-17-05)

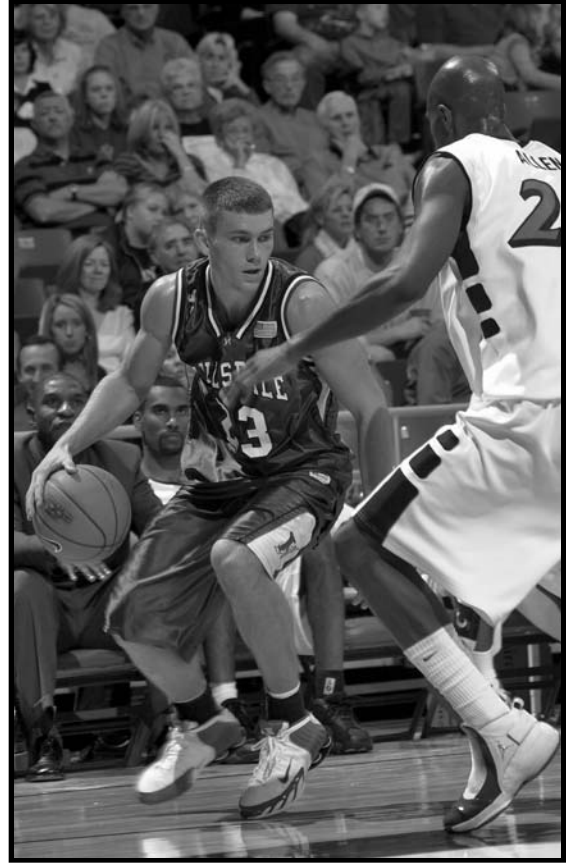
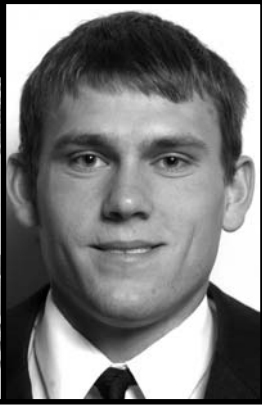
| | GP | FG | TOTAL | | FG | 3-PT | | | FT | FIA | FT% | REB | RPG | AST | BLK | ST | PTS | PPG |
|--------------|-----------|------------|------------|-------------|-----------|------------|-------------|------------|------------|-------------|------------|------------|------------|-----------|-----------|------------|------------|-----|
| | | | FGA | FG% | | FGA | FG% | | | | | | | | | | | |
| 2003-04 | 27 | 32 | 100 | .320 | 10 | 38 | .263 | 7 | 14 | .500 | 63 | 2.3 | 29 | 1 | 13 | 81 | 3.0 | |
| 2004-05 | 28 | 112 | 261 | .429 | 20 | 74 | .270 | 58 | 75 | .773 | 106 | 3.8 | 58 | 5 | 33 | 302 | 10.8 | |
| 2005-06 | 28 | 120 | 306 | .392 | 26 | 86 | .302 | 66 | 86 | .767 | 134 | 4.8 | 87 | 5 | 46 | 332 | 11.9 | |
| TOTAL | 83 | 264 | 673 | .392 | 50 | 198 | .252 | 131 | 175 | .749 | 303 | 3.7 | 174 | 11 | 92 | 715 | 8.6 | |

2006-07 Hillsdale College Men's Basketball

#21 - Tim Homan



Junior □ Forward
6 feet, 4 inches
Celina, Ohio
Celina High School



2005-06: Missed a handful of games in the middle of the season due to injury, but kept up consistent production from sophomore season...Was named to the All-Tournament Team at the Tangerine Tournament in Winterpark, Fla. on Dec. 26-27...Scored a season-high 27 points in a loss to Rollins College at that tournament...Scored in double figures 16 times...Scored 24 points in a 60-59 home win over Indianapolis on Nov. 22... **2004-05:** Named Second Team All-GLIAC South Division after spectacular freshman campaign. Pulled off the rare feat of shooting more than 50 percent from the field and 80 percent from the free throw line. Also shot an impressive 45 percent from 3-point land. Lit up Mercyhurst for a team season-high 34 points on Feb. 19. Was tops on the team in scoring average, with 12.6 points per game, while finishing second in rebounds, third in blocks and tied for second in steals. Also led the team in minutes per game with 32.4. **High school:** Finished his prep career as Celina High School's all-time leading scorer. Averaged 16 points per game as a sophomore and junior, mugging that figure to 21 points per game as a senior. Shot 88 percent from the free throw line and 67 percent from the field as a senior. Was named All-Northwest Ohio three times, All-District three times and was the MVP of the school's Holiday Shootout three times. Named Division 1 Third Team All-State as a senior. Also earned three letters in football. Obtained his pilot license in the summer of 2004.

Tim's Career Highs



- Minutes:** 39 vs. St. Francis (12-17-05)
- Points:** 34 vs. Mercyhurst (2-19-05)
- Rebounds:** 9 vs. Wayne State (12-10-05)
- Assists:** 6 vs. Ashland (2-26-05)
- Field Goals:** 9 vs. Mansfield (12-29-05)
- Field Goal Attempts:** 16 vs. St. Francis (12-17-05)
- 3-point Field Goals:** 5 vs. Hawaii-Hilo (11-27-04)
- 3-point Field Goal Attempts:** 11 vs. Gannon (2-17-05)
- Free Throws:** 9 vs. Wayne State (12-11-04)
- Free Throw Attempts:** 9 vs. Wayne State (12-11-04)
- Steals:** 3 vs. Ferris State (1-7-06)
- Blocks:** 4 vs. St. Francis (12-17-05)

| | GP | TOTAL | | | 3-PT | | | FT | FTA | FT% | REB | RPG | AST | BLK | ST | PTS | PPG |
|--------------|-----------|------------|------------|-------------|------------|------------|-------------|-----------|-----------|-------------|------------|------------|-----------|-----------|-----------|------------|-------------|
| | | FG | FGA | FG% | FG | FGA | FG% | | | | | | | | | | |
| 2004-05 | 28 | 123 | 245 | .502 | 63 | 140 | .450 | 43 | 53 | .811 | 122 | 4.4 | 47 | 17 | 33 | 352 | 12.6 |
| 2005-06 | 22 | 96 | 199 | .482 | 45 | 111 | .405 | 24 | 29 | .828 | 79 | 3.6 | 20 | 13 | 20 | 261 | 11.9 |
| TOTAL | 50 | 219 | 444 | .493 | 108 | 250 | .432 | 67 | 82 | .817 | 201 | 4.0 | 67 | 30 | 53 | 613 | 12.3 |

2006-07 Hillsdale College Men's Basketball

#32 - Travis Worst

Sophomore □ Guard
6 feet, 3 inches
Grand Rapids, Mich.
Forest Hills Northern High School



2005-06: Had solid rookie campaign with the Chargers, playing in 27 of the team's 28 games, including five starts...Played his most consistent basketball in the second half of the season, scoring 10 points or more in four of the team's final nine games...Scored a career-high 14 points twice, vs. Ashland Feb. 2 and vs. Gannon Feb. 9...Had his best all-around game at Gannon on Dec. 3, with seven points, six rebounds, three assists and four steals. **High School:** Completed a terrific career at Forest Hills Northern High School by being named First Team All-State as a senior. Averaged 21 points and seven rebounds per game last year.

Travis' Career Highs



- Minutes:** 27 vs. Lake Superior State (1-26-06)
- Points:** 14 vs. Ashland (2-2-06)
- Rebounds:** 6 vs. Gannon (12-3-05)
- Assists:** 3 vs. Gannon (2-9-06)
- Field Goals:** 6 vs. Ashland (2-2-06)
- Field Goal Attempts:** 8 vs. U-M Dearborn (2-21-06)
- 3-point Field Goals:** 1 vs. Findlay (2-28-06)
- 3-point Field Goal Attempts:** 4 vs. Lake Superior State (1-26-06)
- Free Throws:** 4 vs. Mercyhurst (2-11-06)
- Free Throw Attempts:** 6 vs. Mercyhurst (2-11-06)
- Steals:** 4 vs. Gannon (12-3-05)
- Blocks:** none

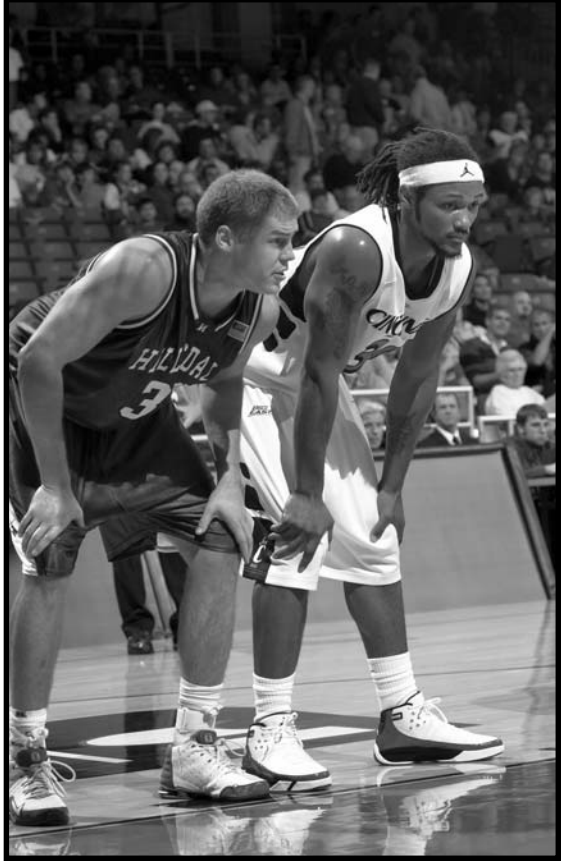
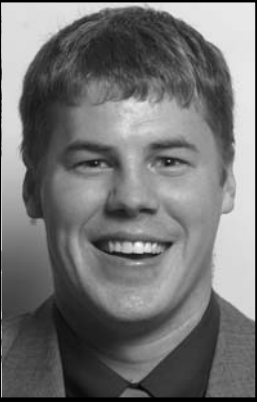
| | TOTAL | | | | 3-PT | | | | | | | | | | | | | | |
|---------------|-------|----|-----|------|------|-----|------|----|-----|------|----|----|-----|-----|-----|-----|----|-----|-----|
| | GP | FG | FGA | FG% | FG | FGA | FG% | FT | FIA | FT% | OR | DR | REB | RPG | AST | BLK | ST | PTS | PPG |
| 2005-06 | 27 | 54 | 116 | .466 | 7 | 19 | .368 | 18 | 26 | .692 | 32 | 49 | 81 | 3.0 | 19 | 1 | 22 | 133 | 4.9 |
| TOTALS | 27 | 54 | 116 | .466 | 7 | 19 | .368 | 18 | 26 | .692 | 32 | 49 | 81 | 3.0 | 19 | 1 | 22 | 133 | 4.9 |

2006-07 Hillsdale College Men's Basketball

#33 - John Farr



Senior □ Center
6 feet, 8 inches
Marietta, Ohio
Marietta High School



2005-06: Suffered through an injury-marred season, missing 12 games from Jan. 3-Feb. 20...Was off to a strong start to the season, scoring at least eight points in seven of the team's first nine games...Returned from injury in road win vs. Northwood Feb. 20, scoring four points. **2004-05:** Was often the lone big man in the starting lineup for Hillsdale, and responded with his best season. Was fourth on the team in scoring at 10.7 points per game, but was tops in rebounding with 144. Scored a career-high 25 points vs. Indianapolis Jan. 2, while making 3-of-4 3-pointers in that game. Followed that up with a 22-point, 11-rebound game against All-GLIAC center Josh Buettner and Michigan Tech on Jan. 8. Led the team in blocked shots, which included a career-high six swats against Saginaw Valley Dec. 4. **2003-04:** Saw action in 26 games, scoring 8.1 points per contest. Led Chargers with a .512 field goal percentage and 17 blocked shots. Scored a season-high 21 points vs. Ashland. **2002-03:** Redshirted. **High School:** Was a three-time All-Conference, All-Ohio and All-District player at Marietta High School. First Team All-Academic as a senior. Named Conference Player of the Year as a senior, when he averaged 19 points and 12 rebounds per game. Was awarded the Archie Griffin Award for sportsmanship.

John's Career Highs

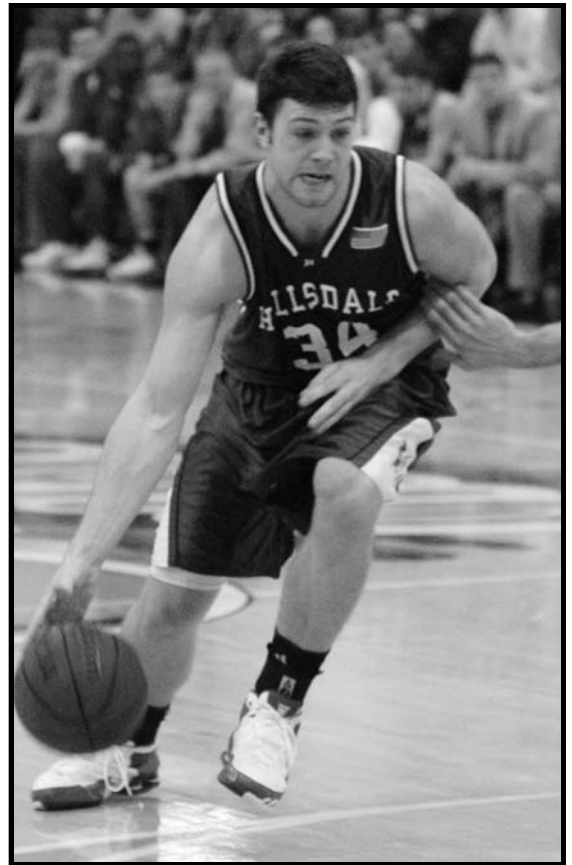


- Minutes:** 35 vs. Michigan Tech (1-8-05)
- Points:** 25 vs. Indianapolis (1-2-05)
- Rebounds:** 11 vs. Michigan Tech (1-8-05)
- Assists:** 3 vs. Spring Arbor (12-28-04)
- Field Goals:** 10 vs. Indianapolis (1-2-05)
- Field Goal Attempts:** 15 vs. Indianapolis (1-2-05)
- 3-point Field Goals:** 3 vs. Indianapolis (1-2-05)
- 3-point Field Goal Attempts:** 4 vs. Indianapolis (1-2-05)
- Free Throws:** 5 vs. Wayne State (12-10-05)
- Free Throw Attempts:** 10 vs. Wayne State (2-12-05)
- Steals:** 1 vs. Findlay (2-28-06)
- Blocks:** 6 vs. Saginaw Valley (12-4-04)

| | GP | FG | TOTAL | | 3-PT | | FGA | FG% | FT | FTA | FT% | REB | RPG | AST | BLK | ST | PTS | PPG |
|--------------|-----------|------------|------------|-------------|-----------|-----------|-------------|------------|------------|-------------|------------|------------|-----------|-----------|-----------|------------|------------|-----|
| 2003-04 | 26 | 85 | 166 | .512 | 0 | 1 | .000 | 40 | 60 | .667 | 101 | 3.9 | 19 | 17 | 9 | 210 | 8.1 | |
| 2004-05 | 28 | 126 | 232 | .543 | 10 | 28 | .357 | 38 | 76 | .500 | 144 | 5.1 | 33 | 42 | 15 | 300 | 10.7 | |
| 2005-06 | 16 | 44 | 84 | .524 | 4 | 12 | .333 | 22 | 30 | .733 | 52 | 3.3 | 15 | 13 | 6 | 114 | 7.1 | |
| TOTAL | 70 | 255 | 482 | .529 | 14 | 41 | .341 | 100 | 166 | .602 | 297 | 4.2 | 67 | 72 | 30 | 624 | 8.9 | |

2006-07 Hillsdale College Men's Basketball

#34 - Jason Weaver



2005-06: Played the biggest role on the team in his career, starting 13 games and averaging a career-high 15 minutes per game...Scored in double figures five times, including a season-high 13 points at Findlay Feb. 4 and at St. Francis (Ill.) on Dec. 17...Hard-working player who is always willing to do the dirty work for his teammates. **2004-05:** Played in 25 games, finishing with 73 total points. Was one of the team's most accurate free throw shooters, making 83 percent of his shots from the charity stripe. **2003-04:** Saw limited action in 25 games. Set career highs with 75 points, 11 blocked shots and 59 rebounds. Had nine rebounds in a game vs. UM-Dearborn on Nov. 25. **High school:** Highly decorated player, earning Honorable Mention All-State honors three times while being named All-Conference four times. Racked up 20 points and 10 rebounds per game as a senior for the Chiefs. Led his team to a league title in 1999-2000. Named Team MVP twice.

Jason's Career Highs



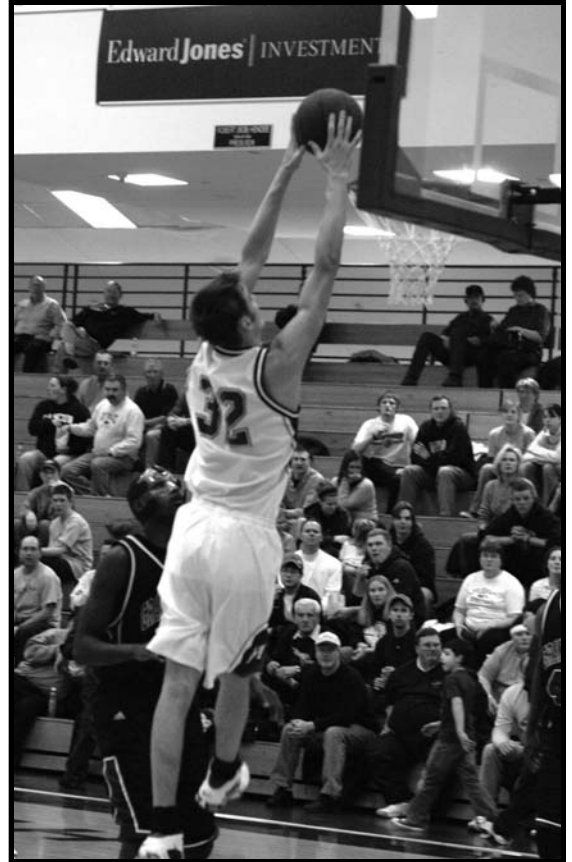
- Minutes:** 23 vs. Tampa (12-27-05)
- Points:** 16 vs. Seattle-Pacific (11-25-04)
- Rebounds:** 10 vs. Ashland (2-28-04)
- Assists:** 3 vs. Mansfield (12-29-05)
- Field Goals:** 5 vs. Michigan Tech (1-21-06)
- Field Goal Attempts:** 11 vs. Michigan Tech (1-21-06)
- 3-point Field Goals:** 2 vs. Tampa (12-27-05)
- 3-point Field Goal Attempts:** 3 vs. Tampa (12-27-05)
- Free Throws:** 5 vs. Seattle-Pacific (11-25-04)
- Free Throw Attempts:** 6 vs. Ashland (2-28-04)
- Steals:** 2 vs. Michigan Tech (1-21-06)
- Blocks:** 3 vs. Northwood (12-29-03)

| | GP | FG | TOTAL | | 3-PT | | FT | FIA | FT% | REB | RPG | AST | BLK | ST | PTS | PPG | |
|----------------|-----------|-----------|------------|-------------|----------|-----------|-------------|-----------|-----------|-------------|-----------|------------|-----------|-----------|-----------|------------|------------|
| | | | FGA | FG% | FGA | FG% | | | | | | | | | | | |
| 2003-04 | 25 | 30 | 75 | .400 | 4 | 12 | .333 | 11 | 17 | .647 | 59 | 2.4 | 10 | 11 | 6 | 75 | 3.0 |
| 2004-05 | 25 | 24 | 66 | .364 | 5 | 14 | .357 | 20 | 24 | .833 | 37 | 1.5 | 4 | 6 | 6 | 73 | 2.9 |
| 2005-06 | | | | | | | | | | | | | | | | | |
| TOTAL | 50 | 54 | 141 | .383 | 9 | 26 | .346 | 31 | 41 | .756 | 96 | 1.9 | 14 | 17 | 12 | 148 | 3.0 |

2006-07 Hillsdale College Men's Basketball

#42 - Tony Gugino

Sophomore □ Center
 6 feet, 9 inches
 Holland, Mich.
 Holland Christian
 High School



2005-06: Made big impact in his first season on the active roster...After scoring in single-digits in his first 12 games, tallied 10 or more points in eight of the team's final 16 games...Scored a career-high 23 points in 87-7- home win over Lake Superior State on Jan. 26...Scored at least 10 points in four straight games starting on Jan. 3...Ranked among the GLIAC's leaders in blocked shots with 50. **2004-05:** Redshirted. **High School:** Led the Holland Christian Maroons to 31 wins in his two varsity seasons. Improved tremendously as a senior, averaging 22 points, eight rebounds, two steals and two blocked shots per game in 2003-04. Comes from a family of basketball players. His uncle Wade played professional basketball in France, while two other uncles played for Hope College. Seven of his family members are six feet tall or taller. Selected All-Conference, All-Area and Third Team All-State following senior season.

Tony's Career Highs



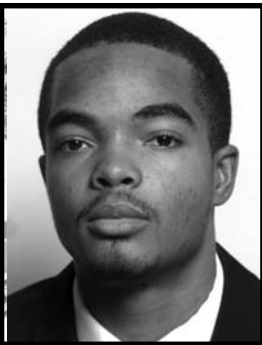
- Minutes:** 35 vs. Michigan Tech (1-14-06)
- Points:** 23 vs. Lake Superior St. (1-26-06)
- Rebounds:** 11 vs. U-M Dearborn (2-21-06)
- Assists:** 3 vs. Ashland (2-2-06)
- Field Goals:** 8 vs. Ferris State (1-7-06)
- Field Goal Attempts:** 14 vs. Ashland (1-14-06)
- 3-point Field Goals:** 3 vs. Ashland (1-14-06)
- 3-point Field Goal Attempts:** 5 vs. Ashland (1-14-06)
- Free Throws:** 5 vs. Ferris State (1-7-06)
- Free Throw Attempts:** 12 vs. Ferris State (1-7-06)
- Steals:** 3 vs. Gannon (2-9-06)
- Blocks:** 5 vs. U-M Dearborn (2-21-06)

| | TOTAL | | | | 3-PT | | | | | | | | | | | | | | |
|---------------|-------|----|-----|------|------|-----|------|----|-----|------|----|----|-----|-----|-----|-----|----|-----|-----|
| | GP | FG | FGA | FG% | FG | FGA | FG% | FT | FIA | FT% | OR | DR | REB | RPG | AST | BLK | ST | PTS | PPG |
| 2004-05 | 17 | 7 | 20 | .350 | 0 | 0 | .000 | 7 | 11 | .636 | 10 | 26 | 36 | 2.1 | 4 | 1 | 4 | 21 | 1.2 |
| TOTALS | 17 | 7 | 20 | .350 | 0 | 0 | .000 | 7 | 11 | .636 | 10 | 26 | 36 | 2.1 | 4 | 1 | 4 | 21 | 1.2 |

2006-07 Hillsdale College Men's Basketball

#2 - Nick Jennings

Freshman □ Guard
5 feet, 9 inches
Dayton, Ohio
Stebbins High School



Lightning-quick point guard who could play his way into a starting role this season...Has a 34-inch vertical leap...Earned a 3.9 grade point average at Stebbins High School in Dayton, Ohio...Averaged 16 points, four steals and six assists per game and was named team MVP as a senior...Was picked to the All-Mid Miami League First Team and a Southwest Ohio All-District selection.

Joined the basketball team this year in his final season of athletic eligibility at Hillsdale College.

#4 - Joe Dunham

Senior □ Guard
6 feet, 0 inches
Thompson, N.D.
Thompson High School



#23 - Kyle Brown

Freshman □ Forward
6 feet, 4 inches
Strongsville, Ohio
Strongsville High School



Big-time scorer at Strongsville High School in Ohio...Averaged 24 points, 7.8 rebounds and 3 assists per game as a senior...Has 34-inch vertical leap and scored more than 30 points seven times in his senior season.

Athletically gifted player who has the complete offensive package...Likely to earn starter-level minutes this season...Has the ball-handling skills of a guard but is big and strong enough to be an effective rebounder...Led Toledo St. John's High School to the Ohio state semifinals in 2005-06.

#40 - Andrew Taylor

Freshman □ Forward
6 feet, 7 inches
Toledo, Ohio
St. John's High School



#44 - Andrew Daugherty

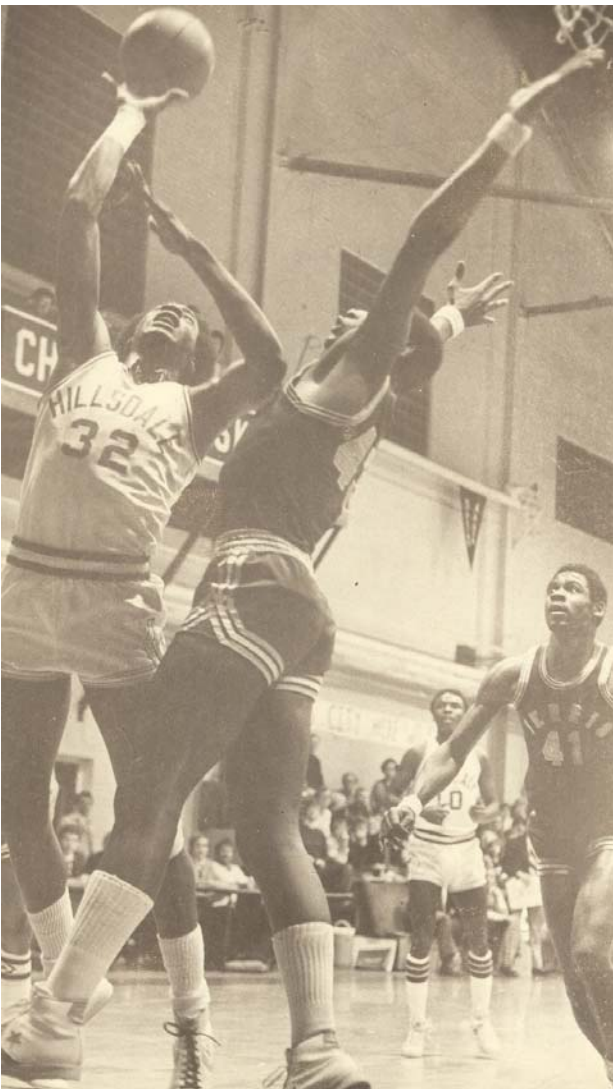
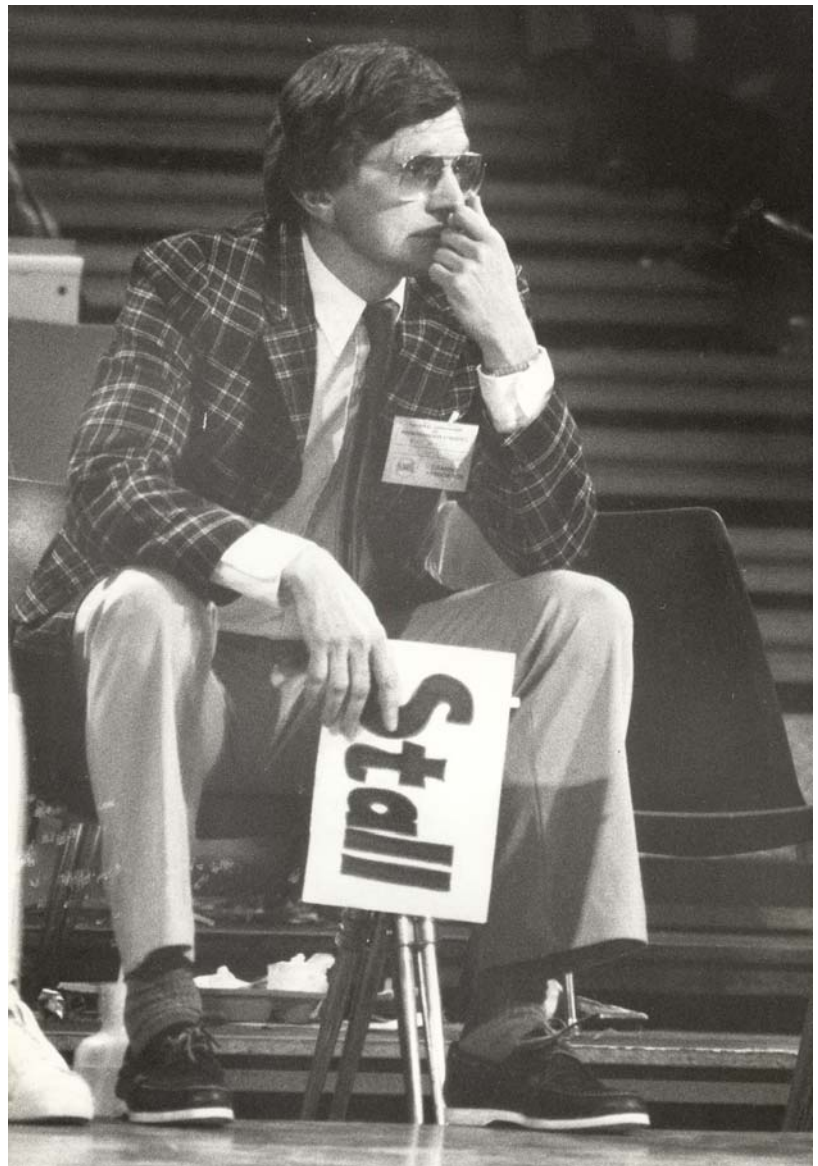
Senior □ Forward
6 feet, 4 inches
Hudson, Mich.
Hudson High School



Latest in a long line of football players who have joined Ed Douma's basketball teams at Hillsdale College...Was a top defensive lineman on the Charger football team from 2002-2005...Was named the team's defensive player of the week five times in 2005...Named the team's Outstanding Defensive Lineman for 2005.

2006-07 Hillsdale College Men's Basketball

Former head coach Bill Morse is shown here at the NAIA Final Four in 1981. Morse is Hillsdale's all-time leader in winning percentage by a men's basketball coach, winning 73.9 percent of his games.



In this photo, dated March 6, 1979, Dale Allen goes up for a shot vs. Ferris State. Allen is one of the greatest players in Charger basketball history, and was inducted into the school's Athletic Hall of Fame. Allen is Hillsdale's fifth all-time leading scorer and sixth all-time leading rebounder.

2006-07 Hillsdale College Men's Basketball

CAREER SCORING

| | | | |
|-----|-----------------|-----------|-------|
| 1. | Eric Allaire | 1985-89 | 2,174 |
| 2. | Tim Kissman | 1990-94 | 1,792 |
| 3. | Tom Adams | 1971-75 | 1,772 |
| 4. | Jim Bauer | 1986-90 | 1,756 |
| 5. | Dale Allen | 1977-81 | 1,699 |
| 6. | Ted Hauptman | 1978-82 | 1,693 |
| 7. | Mike Lake | 1991-95 | 1,608 |
| 8. | Matt Mlynarchek | 1999-2003 | 1,527 |
| 9. | Bill Granberry | 1981-85 | 1,525 |
| 10. | Jonathon Dues | 1999-2003 | 1,478 |

CAREER ASSISTS

| | | | |
|-----|---------------|-----------|-----|
| 1. | Rob Fodor | 1979-83 | 751 |
| 2. | Jerry Tharp | 1987-91 | 524 |
| 3. | Steve Dunning | 1984-88 | 426 |
| 4. | Dave Springer | 1980-84 | 403 |
| 5. | Mike Lake | 1991-95 | 392 |
| 6. | Earl Walton | 1983-87 | 391 |
| 7. | John Hamood | 2002-06 | 338 |
| 8. | Jack Furlong | 1981-85 | 326 |
| 9. | Steve Brown | 1990-94 | 321 |
| 10. | Jonathon Dues | 1999-2003 | 292 |

CAREER FIELD GOALS MADE

| | | | |
|-----|-----------------|-----------|-----|
| 1. | Eric Allaire | 1985-89 | 831 |
| 2. | Tom Adams | 1971-75 | 764 |
| 3. | Ted Hauptman | 1978-82 | 715 |
| 4. | Jim Bauer | 1986-90 | 711 |
| 5. | Tim Kissman | 1990-94 | 697 |
| 6. | Dale Allen | 1977-81 | 626 |
| 7. | Bill Granberry | 1981-85 | 620 |
| 8. | Matt Mlynarchek | 1999-2003 | 573 |
| 9. | Dave Springer | 1980-84 | 564 |
| 10. | Rob Fodor | 1979-83 | 562 |

CAREER 3-POINT FIELD GOALS MADE

| | | | |
|-----|----------------|-----------|-----|
| 1. | Jerry Tharp | 1987-91 | 325 |
| 2. | Mike Lake | 1991-95 | 294 |
| 3. | Cory Coe | 2002-06 | 266 |
| 4. | Jonathon Dues | 1999-2003 | 206 |
| 5. | Ed Carter | 1998-2001 | 162 |
| 6. | George Yarberr | 1991-95 | 154 |
| 7. | Jeff Wendt | 1992-95 | 148 |
| 8. | Clarence Black | 1995-99 | 141 |
| 9. | Ryan Watson | 1994-96 | 129 |
| 10. | Aaron Veldheer | 1998-2001 | 125 |

CAREER REBOUNDS

| | | | |
|-----|-----------------|-----------|-------|
| 1. | Tom Adams | 1971-75 | 1,190 |
| 2. | Bill Granberry | 1981-85 | 1,135 |
| 3. | Ray Papach | 1975-78 | 1,023 |
| 4. | Matt Mlynarchek | 1999-2003 | 984 |
| 5. | Jim Bauer | 1986-90 | 940 |
| 6. | Dale Allen | 1977-81 | 904 |
| 7. | Terry Sines | 1984-88 | 735 |
| 8. | Fred Cumberland | 1982-86 | 706 |
| 9. | Ted Hauptman | 1978-82 | 696 |
| 10. | Ken Moorehead | 1964-68 | 694 |

CAREER STEALS

| | | | |
|-----|-----------------|-----------|-----|
| 1. | Steve Dunning | 1984-88 | 212 |
| 2. | John Hamood | 2002-06 | 202 |
| 3. | Jerry Tharp | 1987-91 | 188 |
| 4. | Fred Cumberland | 1982-86 | 163 |
| 5. | Bill Granberry | 1981-85 | 152 |
| 6. | Mike Lake | 1991-95 | 143 |
| 7. | Ed Carter | 1998-2001 | 142 |
| 8. | Dave Springer | 1980-84 | 136 |
| 9. | Earl Walton | 1983-87 | 127 |
| 10. | Terry Sines | 1984-88 | 126 |

CAREER FREE THROWS MADE

| | | | |
|-----|-----------------|-----------|-----|
| 1. | Dale Allen | 1977-81 | 446 |
| 2. | Eric Allaire | 1985-89 | 403 |
| 3. | Steve Dunning | 1984-88 | 346 |
| 4. | Tom Adams | 1971-75 | 342 |
| 5. | Jim Bauer | 1986-90 | 339 |
| 6. | Mike Lake | 1991-95 | 338 |
| 7. | Matt Mlynarchek | 1999-2003 | 308 |
| 8. | Tim Kissman | 1990-94 | 296 |
| 9. | Dave Springer | 1980-84 | 293 |
| 10. | Terry Sines | 1984-88 | 288 |

CAREER BLOCKED SHOTS

| | | | |
|-----|------------------|---------------------|-----------|
| 1. | Bill Granberry | 1981-85 | 176 |
| 2. | Matt Mlynarchek | 1999-2003 | 152 |
| 3. | Sean Edmondson | 1989-93 | 144 |
| 4. | Terry Sines | 1984-88 | 129 |
| 5. | Chris Northcross | 2000-03 | 123 |
| 6. | Ted Hauptman | 1978-82 | 74 |
| 7. | Dan McGrath | 1996-2001 | 73 |
| 8. | John Farr | 2003-present | 72 |
| 9. | Jim Shuster | 1978-82 | 66 |
| 10. | Steve Dunning | 1984-88 | 56 |

2006-07 Hillsdale College Men's Basketball

SINGLE-SEASON SCORING

| | | | |
|-----|------------------|---------|-----|
| 1. | Maynard Crawley | 1974-75 | 731 |
| 2. | Eric Allaire | 1988-89 | 699 |
| 3. | Bud Acton | 1965-66 | 683 |
| 4. | Dennis Jazwiecki | 1971-72 | 634 |
| 5. | Mike Lake | 1994-95 | 600 |
| 6. | Ken Moorehead | 1967-68 | 591 |
| 7. | Eric Allaire | 1987-88 | 577 |
| 8. | Tim Kissman | 1992-93 | 569 |
| 9. | Fred Cumberland | 1985-86 | 562 |
| 10. | Jim Graham | 1970-71 | 531 |

1,000-POINT CLUB

| | | | |
|-----|------------------|-----------|-------|
| 1. | Eric Allaire | 1985-89 | 2,174 |
| 2. | Tim Kissman | 1990-94 | 1,792 |
| 3. | Tom Adams | 1971-75 | 1,772 |
| 4. | Jim Bauer | 1986-90 | 1,756 |
| 5. | Dale Allen | 1977-81 | 1,699 |
| 6. | Ted Hauptman | 1978-82 | 1,693 |
| 7. | Mike Lake | 1991-95 | 1,608 |
| 8. | Matt Mlynarchek | 1999-2003 | 1,527 |
| 9. | Bill Granberry | 1981-85 | 1,525 |
| 10. | Jonathon Dues | 1999-2003 | 1,478 |
| 11. | Dave Springer | 1980-84 | 1,438 |
| 12. | Cory Coe | 2002-06 | 1,437 |
| 13. | Rob Fodor | 1979-83 | 1,418 |
| 14. | Fred Cumberland | 1982-86 | 1,399 |
| 15. | Jerry Tharp | 1987-91 | 1,390 |
| 16. | Steve Dunning | 1984-88 | 1,319 |
| 17. | Greg Martin | 1987-91 | 1,269 |
| 18. | Terry Sines | 1984-88 | 1,266 |
| 19. | Cliff Turner | 1960-62 | 1,195 |
| 20. | Ed Carter | 1998-2001 | 1,181 |
| 21. | Tom Wilson | 1968-71 | 1,167 |
| 22. | Jim Graham | 1969-71 | 1,087 |
| 23. | Jim Shuster | 1981-85 | 1,081 |
| 24. | Rick Kucera | 1972-76 | 1,050 |
| 25. | Maynard Crawley | 1973-75 | 1,046 |
| 26. | Ken Moorehead | 1966-68 | 1,043 |
| 27. | Dennis Jazwiecki | 1971-74 | 1,031 |
| 28. | Ray Papach | 1975-77 | 1,014 |

CAREER

FIELD GOAL % (min. 250 FGM)

| | | | | | |
|-----|-----------------|-----------|-----|------|-------|
| 1. | Tim Kissman | 1990-94 | 697 | 1139 | 0.612 |
| 2. | Dale Allen | 1997-81 | 626 | 1029 | 0.608 |
| 3. | Fred Cumberland | 1982-86 | 559 | 943 | 0.593 |
| 4. | Jim Bauer | 1986-90 | 711 | 1220 | 0.583 |
| 5. | Johnnie Hill | 1979-81 | 327 | 572 | 0.572 |
| 6. | Jim Shuster | 1981-85 | 459 | 843 | 0.544 |
| 7. | Bill Granberry | 1981-85 | 620 | 1147 | 0.541 |
| 8. | Maynard Crawley | 1973-75 | 450 | 833 | 0.540 |
| 9. | Willie Scott | 1978-80 | 286 | 539 | 0.531 |
| 10. | Dan McGrath | 1996-2001 | 358 | 678 | 0.528 |

CAREER

FREE THROW % (min. 100 FTM)

| | | | | | |
|-----|---------------|---------|-----|-----|-------|
| 1. | Cory Coe | 2002-06 | 258 | 290 | 0.890 |
| 2. | Mike Lake | 1991-95 | 338 | 391 | 0.864 |
| 3. | Dave Springer | 1980-84 | 293 | 342 | 0.857 |
| 4. | Jerry Tharp | 1987-91 | 221 | 270 | 0.819 |
| 5. | Chad Logan | 1990-94 | 103 | 128 | 0.805 |
| 6. | Ted Hauptman | 1978-82 | 267 | 339 | 0.788 |
| 7. | Tim McKee | 1977-79 | 146 | 186 | 0.785 |
| 8. | Rob Fodor | 1979-83 | 261 | 333 | 0.784 |
| 9. | Tony Gericke | 1987-91 | 171 | 220 | 0.777 |
| 10. | Brooks Miller | 2001-03 | 190 | 245 | 0.776 |

CAREER

3-POINT FIELD GOAL % (min. 75 #-FGM, since 1986-87)

| | | | | | |
|-----|----------------|---------|-----|-----|-------|
| 1. | Chad Logan | 1990-94 | 122 | 274 | 0.445 |
| 2. | Jerry Tharp | 1987-91 | 325 | 760 | 0.428 |
| 3. | George Yarbery | 1991-95 | 154 | 367 | 0.420 |
| 4. | Ryan Watson | 1994-96 | 129 | 308 | 0.419 |
| 5. | Eric Allaire | 1985-89 | 109 | 263 | 0.414 |
| 6. | Aaron Veldheer | 1998-01 | 125 | 309 | 0.405 |
| 7. | Tim Kissman | 1990-94 | 96 | 240 | 0.400 |
| 8. | Scott Elwer | 1995-97 | 80 | 201 | 0.398 |
| 9. | Jonathon Dues | 1999-03 | 206 | 524 | 0.393 |
| 10. | Ed Carter | 1998-01 | 162 | 414 | 0.391 |

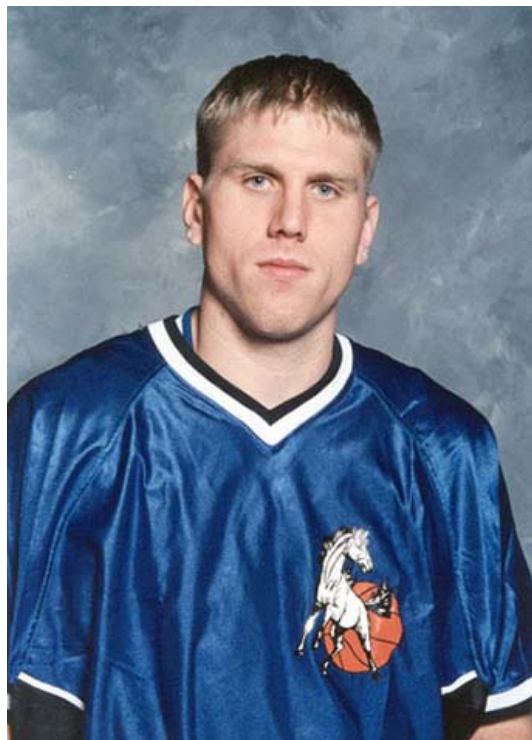
2006-07 Hillsdale College Men's Basketball

TEAM SINGLE GAME RECORDS:

| | |
|------------------------------------|---------------------------------------------|
| Most points in a game | 130 vs. Lake Superior State 2/24/83 |
| Most points in a half | 73 vs. Lake Superior State 2/24/83 |
| Fewest points scored | 16 vs. Saginaw Valley State 1981 |
| Fewest points allowed | 5 vs. Saginaw Valley State 1981 |
| Most blocked shots | 10 vs. Siena Heights 12/1/90 |
| | 10 vs. Wayne State 2/23/02 |
| | 10 vs. UM-Dearborn 12/27/03 |
| Highest free throw percentage | |
| (15 min.) | 97% (28/29) vs. Lake Superior State 2/10/94 |
| Most free throws attempted | 47 vs. Siena Heights 12/3/83 |
| Most free throws made | 36 vs. Siena Heights 12/3/83 |
| Most 3-point field goal made | 23 vs. Spring Arbor 12/22/92 |
| Highest 3-point field goal % | 60.0% vs. Lake Superior State 1/23/97 |
| Most turnovers | 28 vs. Ferris State 1/24/91 |
| Fewest turnovers | 6 vs. Gannon 1/19/02 |
| Fewest personal fouls | 6 vs. Lake Superior State 12/11/92 |

TEAM SINGLE SEASON RECORDS:

| | |
|---------------------------------------------|------------------------------|
| Highest winning percentage | 80.0% (27-7) 1980-81 |
| Most wins in a season | 28 1980-81 |
| Most consecutive wins | 13 2001-02 |
| Highest finish in national tournament | 4th in NAIA 1980-81 |
| Most GLIAC wins | 13 1980-81, 1999-00, 2000-01 |
| Highest GLIAC record | 13-3 (81.3%) 1980-81 |
| Highest free throw percentage | 76.7% 1980-81 |
| Highest 3-pt. FG percentage | 41.3% 1989-90 |
| Most 3-pt. FG made per game | 13.1 1992-93 |



Matt Mlynarchek holds the school record for best field goal shooting performance in one game (10/10).

INDIVIDUAL SINGLE GAME RECORDS:

| | |
|------------------------------------------|-----------------------------------------------------|
| Most points in a game | 57 John Kirk vs. Lake Superior State, 1968 |
| Most points in a half | 28 Jerry Tharpe vs. Northwood 12/29/90 |
| Most field goals made | 23 John Kirk vs. Lake Superior State, 1968 |
| Most field goals attempted | 34 Bud Acton vs. Davenport Institute 1/17/66 |
| Highest field goal % .100% (10-10) | Matt Mlynarchek vs. Tri-State 1/30/03 |
| Most 3-pt. FG made | 9 Mike Lake vs. Northwood 2/18/95 |
| Highest 3-pt. FG % | 83% Chad Logan vs. Findlay 2/4/92 |
| Best free throw % (10 min.) 100% (11/11) | Mike Lake vs. Ferris State 3/4/95 |
| | 100% (11/11) Chris Northcross vs. Northwood 12/1/01 |
| Most free throws made | 17 Bud Action vs. Detroit College 1966 |
| | 17 Willie Scott vs. Grand Valley State 1980 |
| Most total rebounds | 30 Ken Moorehead vs. Bluffton College 1967 |
| Most offensive rebounds | 14 John Barnes vs. Bluffton College 1967 |
| Most defensive rebounds | 20 Bud Action vs. Detroit College 1966 |
| | 20 Ken Moorehead vs. Aquinas College 1966 |
| Most assists | 20 Rob Fodor vs. Lake Superior State 1983 |
| Most steals | 6 Scott Elwer vs. Gannon 1/18/97 |
| | 6 Ed Carter vs. Ferris State 1/11/01 |
| | 6 Matt Mlynarchek vs. Tiffin 11/24/01 |
| | 6 John Hamood at Mercyhurst 1/29/04 |

INDIVIDUAL RECORDS FOR A SEASON:

| | |
|----------------------------------------|----------------------------------|
| Most FG made | 310 Maynard Crawley 1974-75 |
| Most FG attempted | 571 Maynard Crawley 1974-75 |
| Highest FG % | |
| (minimum of 5 makes per game) | 69% Dale Allen (174/252) 1980-81 |
| Most free throws made | 164 Eric Allaire 1988-89 |
| Most free throw attempts | 229 Eric Allaire 1988-89 |
| Highest points per game average | 26.3 Bud Action 1965-66 |
| Highest total rebounding average | 15.7 Bud Action 1965-66 |
| Highest assist average | 9.2 Rob Fodor 1981-82 |
| Most 3-pt. field goals made | 105 Mike Lake 1994-95 |
| Most 3-pt. field goals attempted | 265 Mike Lake 1994-95 |
| Highest 3-pt. shooting percentage | |
| (min. 2 makes per game) | 48.6% Chad Logan 1993-94 |
| Most steals | 69 Steve Dunning 1984-85 |
| Most blocked shots | 74 Bill Granberry 1982-83 |
| | 74 Ted Hauptman 1981-82 |
| Most games played | 35 Dale Allen 1980-81 |
| | 35 Ted Hauptman 1980-81 |
| | 35 Rob Fodor 1980-81 |
| | 35 Johnny Hill 1980-81 |

INDIVIDUAL RECORDS FOR A CAREER:

| | |
|----------------------------------------|--------------------------------|
| Most points scored in a career | 2174 Eric Allaire 1985-89 |
| Most 3-pt. field goals made | 294 Mike Lake 1991-95 |
| Most 3-pt. field goals attempted | 784 Mike Lake 1991-95 |
| Highest three-point percentage | 44.9% Chad Logan 1990-94 |
| Highest FT % | 89% Cory Coe (258/290) 2002-06 |
| Most rebounds | 1190 Tom Adams 1971-75 |
| Most assists | 721 Rob Fodor 1980-83 |
| Most steals | 212 Steve Dunning 1984-88 |
| Most blocked shots | 176 Bill Granberry 1981-85 |
| Most games played | 126 Ted Hauptman 1979-82 |
| Highest career scoring average | 19.6 Eric Allaire 1985-89 |
| Highest rebounding average | 14.4 Ray Papach 1975-77 |

2006-07 Hillsdale College Men's Basketball

| Years | Coach | Wins | Losses | Winning % | League Finish | Specials |
|---------|----------------------|------|--------|-----------|---------------|----------------------|
| 1900 | Student Coaches | 0 | 2 | 0.000 | | |
| 1900-01 | No Games Played | | | | | |
| 1901-02 | Student Coaches | 0 | 2 | 0.000 | | |
| 1902-03 | Student Coaches | 0 | 6 | 0.000 | | |
| 1903-04 | No Games Played | | | | | |
| 1904-05 | Student Coaches | 0 | 2 | 0.000 | | |
| 1905-06 | Student Coaches | 0 | 1 | 0.000 | | |
| 1906-07 | No Games Played | | | | | |
| 1907-08 | Student Coaches | 2 | 2 | 0.500 | | |
| 1908-09 | Student Coaches | 1 | 6 | 0.143 | | |
| 1909-10 | Student Coaches | 3 | 4 | 0.429 | | |
| 1910-11 | Claude Hunt | 4 | 5 | 0.444 | | 1st season in MIAA |
| 1911-12 | Claude Hunt | 4 | 4 | 0.500 | | |
| 1912-13 | Claude Hunt | 6 | 3 | 0.667 | 1st* | |
| 1913-14 | Charles Firth | 3 | 6 | 0.333 | | |
| 1914-15 | Leroy Buchheit | 7 | 7 | 0.500 | | |
| 1915-16 | Leroy Buchheit | 5 | 7 | 0.417 | 1st* | |
| 1916-17 | Leroy Buchheit | 5 | 8 | 0.385 | | |
| 1917-18 | Leroy Buchheit | 1 | 6 | 0.143 | | |
| 1918-19 | Lawrence Mason | 3 | 7 | 0.300 | | |
| 1919-20 | Samuel Taylor | 10 | 4 | 0.714 | 1st | MIAA Champions |
| 1920-21 | William Rennie | 5 | 11 | 0.313 | | |
| 1921-22 | William Rennie | 7 | 5 | 0.583 | | |
| 1922-23 | Louis Ost | 7 | 13 | 0.350 | | |
| 1923-24 | Howard Jefferson | 9 | 11 | 0.450 | | |
| 1924-25 | Howard Jefferson | 3 | 8 | 0.273 | | |
| 1925-26 | Elroy Quckert | 5 | 9 | 0.357 | | |
| 1926-27 | Dwight Harwood | 5 | 6 | 0.455 | | |
| 1927-28 | Dwight Harwood | 4 | 9 | 0.308 | | |
| 1928-29 | Dwight Harwood | 8 | 6 | 0.571 | | |
| 1929-30 | Dwight Harwood | 6 | 4 | 0.600 | | |
| 1930-31 | Dwight Harwood | 11 | 4 | 0.733 | 1st | MIAA Champions |
| 1931-32 | Dwight Harwood | 1 | 12 | 0.077 | | |
| 1932-33 | Dwight Harwood | 11 | 5 | 0.688 | | |
| 1933-34 | Dwight Harwood | 6 | 11 | 0.353 | | |
| 1934-35 | Clifford Weatherwax | 12 | 5 | 0.706 | 1st | MIAA Champions |
| 1935-36 | Clifford Weatherwax | 6 | 10 | 0.375 | | |
| 1936-37 | Clifford Weatherwax | 6 | 8 | 0.429 | | |
| 1937-38 | Clifford Weatherwax | 10 | 7 | 0.588 | | |
| 1938-39 | Clifford Weatherwax | 6 | 12 | 0.333 | | |
| 1939-40 | Clifford Weatherwax | 9 | 9 | 0.500 | | |
| 1940-41 | Dwight Harwood (2nd) | 2 | 16 | 0.111 | | |
| 1941-42 | Dwight Harwood (2nd) | 2 | 5 | 0.286 | | |
| 1942-43 | Dwight Harwood (2nd) | 1 | 14 | 0.067 | | |
| 1943-44 | NO TEAM WORLD WAR II | | | | | |
| 1944-45 | Dwight Harwood (2nd) | 0 | 7 | 0.000 | | |
| 1945-46 | Dwight Harwood (2nd) | 3 | 5 | 0.375 | | |
| 1946-47 | Harold Westerman | 3 | 10 | 0.231 | | |
| 1947-48 | Harold Westerman | 5 | 10 | 0.333 | | |
| 1948-49 | Harold Westerman | 10 | 16 | 0.385 | 1st | MIAA Champions |
| 1949-50 | Paul White | 8 | 13 | 0.381 | | |
| 1950-51 | Irvin Wisniewski | 9 | 11 | 0.450 | | NAIB Dist. 23 Champs |
| 1951-52 | Irvin Wisniewski | 4 | 14 | 0.222 | | |
| 1952-53 | Henry W. Fallon | 2 | 15 | 0.118 | | |
| 1953-54 | Ray E. Null | 6 | 16 | 0.273 | | |
| 1954-55 | Dick Wickens | 5 | 18 | 0.217 | | |

| Years | Coach | Wins | Losses | Winning % | League Finish | Specials |
|---------------|-------------------|------------|-------------|--------------|---------------|-------------------------------------|
| 1955-56 | Dick Wickens | 13 | 11 | 0.542 | | |
| 1956-57 | John Williams | 6 | 17 | 0.261 | | |
| 1957-58 | John Williams | 10 | 13 | 0.435 | | |
| 1958-59 | John Williams | 11 | 16 | 0.407 | | |
| 1959-60 | John Williams | 9 | 18 | 0.333 | | |
| 1960-61 | John Williams | 9 | 18 | 0.333 | | Ind. |
| 1961-62 | John Williams | 15 | 14 | 0.517 | | Ind. |
| 1962-63 | John Williams | 3 | 21 | 0.125 | | Ind. |
| 1963-64 | Rod Halstad | 7 | 22 | 0.241 | | Ind. |
| 1964-65 | Rod Halstad | 9 | 17 | 0.346 | | Ind. |
| 1965-66 | Rod Halstad | 17 | 9 | 0.654 | | Ind. |
| 1966-67 | Rod Halstad | 19 | 8 | 0.704 | | Ind. |
| 1967-68 | Jack McAvoy | 19 | 8 | 0.704 | | Ind. |
| 1968-69 | Bob Hodges | 8 | 21 | 0.276 | | Ind. |
| 1969-70 | Bob Hodges | 14 | 15 | 0.483 | | Ind. |
| 1970-71 | Bob Hodges | 11 | 14 | 0.440 | | Ind. |
| 1971-72 | Ronald Ekker | 25 | 8 | 0.758 | | Ind. District 23 Champs |
| 1972-73 | Ronald Ekker | 19 | 9 | 0.679 | | Ind. |
| 1973-74 | Ben Summers | 11 | 18 | 0.379 | | Ind. |
| 1974-75 | Ben Summers | 20 | 13 | 0.606 | | Ind. |
| 1975-76 | Ben Summers | 10 | 16 | 0.385 | 4th | 1st season in GLIAC |
| 1976-77 | Ben Summers | 3 | 28 | 0.097 | 8th | |
| 1977-78 | Bill Morse | 23 | 7 | 0.767 | 2nd | |
| 1978-79 | Bill Morse | 24 | 6 | 0.800 | 2nd | |
| 1979-80 | Bill Morse | 25 | 8 | 0.758 | 2nd | |
| 1980-81 | Bill Morse | 28 | 7 | 0.800 | 1st | GLIAC, District 23 Champs, 4th NAIA |
| 1981-82 | Bill Morse | 16 | 13 | 0.552 | 6th | |
| 1982-83 | Rod Halstad (2nd) | 16 | 14 | 0.533 | 5th | |
| 1983-84 | Rod Halstad (2nd) | 23 | 9 | 0.719 | 2nd | District 23 Champs |
| 1984-85 | Rod Halstad (2nd) | 20 | 13 | 0.606 | 3rd | District 23 Champs |
| 1985-86 | Rod Halstad (2nd) | 16 | 15 | 0.516 | 6th | |
| 1986-87 | Rod Halstad (2nd) | 11 | 16 | 0.407 | 8th | |
| 1987-88 | Rod Halstad (2nd) | 13 | 18 | 0.419 | 9th | District 23 Champs |
| 1988-89 | Rod Halstad (2nd) | 11 | 18 | 0.379 | 7th | |
| 1989-90 | Rod Halstad (2nd) | 10 | 18 | 0.357 | 5th | |
| 1990-91 | Bernie Bailikan | 11 | 16 | 0.407 | 6th | |
| 1991-92 | Bernie Bailikan | 11 | 16 | 0.407 | 8th | |
| 1992-93 | Bernie Bailikan | 17 | 11 | 0.607 | 3rd | |
| 1993-94 | Bernie Bailikan | 11 | 15 | 0.423 | 7th | |
| 1994-95 | Bernie Bailikan | 15 | 14 | 0.517 | 3rd | GLIAC Tour. Champs |
| 1995-96 | Bernie Bailikan | 4 | 22 | 0.154 | 12th | |
| 1996-97 | Bernie Bailikan | 15 | 14 | 0.517 | 3rd/South | |
| 1997-98 | Bernie Bailikan | 5 | 21 | 0.192 | 6th/South | |
| 1998-99 | Ed Douma | 12 | 14 | 0.462 | 5th/South | |
| 1999-00 | Ed Douma | 16 | 11 | 0.593 | 2nd/South | |
| 2000-01 | Ed Douma | 23 | 8 | 0.750 | 1st/South | NCAA II Regionals |
| 2001-02 | Ed Douma | 20 | 8 | 0.714 | T-3rd/South | NCAA First Round |
| 2002-03 | Ed Douma | 16 | 12 | 0.571 | T-4th/South | |
| 2003-04 | Ed Douma | 13 | 14 | 0.481 | 5th/South | |
| 2004-05 | Ed Douma | 15 | 13 | 0.536 | 3rd/South | |
| 2005-06 | Ed Douma | 12 | 16 | 0.428 | 4th/South | |
| TOTALS | | 971 | 1138 | 0.460 | | |

*- MIAA decided champions needed to play all league schools
 joined MIAA in 1910; left in 1960; joined GLIAC before 1975 season

COACHES CAREER WON-LOSS RECORD (1900 through 2006)

| Years | Coach | # of Seasons | Wins | Losses | Winning % | Years | Coach | # of Seasons | Wins | Losses | Winning % |
|---------|----------------------------|--------------|------|--------|-----------|---------------|-------------------------|--------------|------------|-------------|--------------|
| 1900-10 | Student Coaches | 10 | 6 | 25 | 0.194 | 1950-52 | Irvin Wisniewski | 2 | 13 | 25 | 0.342 |
| 1910-13 | Claude Hunt | 3 | 14 | 12 | 0.538 | 1952-53 | Henry W. Fallon | 1 | 2 | 15 | 0.118 |
| 1934-14 | Charles Firth | 1 | 3 | 6 | 0.333 | 1953-54 | Ray E. Null | 1 | 6 | 16 | 0.273 |
| 1914-18 | Leroy Buchheit | 4 | 18 | 28 | 0.391 | 1954-56 | Dick Wickens | 2 | 18 | 29 | 0.383 |
| 1918-19 | Lawrence Mason | 1 | 3 | 7 | 0.300 | 1956-63 | John Williams | 7 | 63 | 117 | 0.350 |
| 1919-20 | Samuel Taylor | 1 | 10 | 4 | 0.714 | 1963-67 | Rod Halstad | 4 | 52 | 56 | 0.481 |
| 1920-22 | William Rennie | 2 | 12 | 16 | 0.429 | 1967-68 | Jack McAvoy | 1 | 19 | 8 | 0.704 |
| 1922-23 | Louis Ost | 1 | 7 | 13 | 0.350 | 1968-71 | Bob Hodges | 3 | 33 | 50 | 0.398 |
| 1923-25 | Howard Jefferson | 2 | 12 | 19 | 0.387 | 1971-73 | Ronald Ekker | 2 | 44 | 17 | 0.721 |
| 1925-26 | Elroy Quckert | 1 | 5 | 9 | 0.357 | 1974-77 | Ben Summers | 3 | 44 | 75 | 0.370 |
| 1926-34 | Dwight Harwood | 8 | 52 | 57 | 0.477 | 1977-82 | Bill Morse | 5 | 116 | 41 | 0.739 |
| 1934-40 | Clifford Weatherwax | 6 | 49 | 51 | 0.490 | 1982-90 | Rod Halstad (2nd Stint) | 8 | 120 | 121 | 0.498 |
| 1940-47 | Dwight Harwood (2nd Stint) | 6 | 8 | 47 | 0.145 | 1990-98 | Bernie Bailikan | 8 | 89 | 129 | 0.408 |
| 1947-49 | Harold Westerman | 3 | 18 | 36 | 0.333 | 1998-Pres. | Ed Douma | 8 | 127 | 96 | 0.570 |
| 1949-50 | Paul White | 1 | 8 | 13 | 0.381 | TOTALS | | 99 | 971 | 1138 | 0.460 |



2005-2006 ALL-GLIAC MEN'S BASKETBALL TEAM

Player of the Year: Dustin Pfeifer - University of Findlay

Freshman of the Year: Aaron Simpson - Northwood University

Coach of the Year: Ron Niekamp - University of Findlay

GLIAC North Division All-Conference First Team

| <u>Name</u> | <u>School</u> | <u>Year</u> | <u>Pos.</u> | <u>Hometown/High School</u> |
|-------------------|-------------------------------|-------------|-------------|-------------------------------|
| Callistus Eziukwu | Grand Valley State University | So. | C | Muskegon, Mich. |
| Courtney James | Grand Valley State University | Sr. | G | Kentwood, Mich./East Kentwood |
| Radayl Richardson | Michigan Tech University | Jr. | G | Detroit, Mich./dePorres |
| Dennis Springs | Ferris State University | Sr. | G | Toledo, Ohio/Scott |
| Rocky Volcy | Northern Michigan University | Jr. | F | Montreal, Que./Duboise |

GLIAC South Division All-Conference First Team

| <u>Name</u> | <u>School</u> | <u>Year</u> | <u>Pos.</u> | <u>Hometown/High School</u> |
|----------------|------------------------|-------------|-------------|---------------------------------|
| Justin Brown | Ashland University | Sr. | C | Columbus, Ohio/West Liberty St. |
| Avi Fogel | Mercyhurst College | Jr. | G | San Diego, Calif. |
| Herb Goliday | Wayne State University | Sr. | G | Royal Oak, Mich./Ferndale |
| Dustin Pfeifer | University of Findlay | Sr. | G | Washington Court House, Ohio |
| Frank Phillips | University of Findlay | Jr. | F | Cincinnati, Ohio/Roger Bacon |

GLIAC North Division All-Conference Second Team

| <u>Name</u> | <u>School</u> | <u>Year</u> | <u>Pos.</u> | <u>Hometown/High School</u> |
|----------------|---------------------------------|-------------|-------------|-----------------------------|
| Antwuan Holt | Ferris State University | Sr. | G | Okemos, Mich. |
| Jason Jamerson | Grand Valley State University | So. | G | Muncie, Ind./Borris |
| Chris Johnston | Saginaw Valley State University | So. | F | Clarkston, Mich. |
| Terrance Shaw | Ferris State University | Jr. | F | Saginaw, Mich./Bridgeport |
| Marco Volcy | Northern Michigan University | Sr. | F | Montreal, Que./LeBlanc |

GLIAC South Division All-Conference Second Team

| <u>Name</u> | <u>School</u> | <u>Year</u> | <u>Pos.</u> | <u>Hometown/High School</u> |
|---------------------|------------------------|-------------|-------------|------------------------------|
| Dorian Bass | University of Findlay | Jr. | G | New Concord, Ohio/John Glenn |
| Cory Coe | Hillsdale College | Sr. | G | Williamston, Mich. |
| Kris Krzyminski | Wayne State University | Jr. | G | Flint, Mich./Central |
| Terry Smith | Mercyhurst College | So. | G | Syracuse, NY/Bishop Ludden |
| Aurimas Truskauskas | Gannon University | Jr. | F | Kalnelis Village, Lithuania |

GLIAC North Division All-Defensive Team

| <u>Name</u> | <u>School</u> | <u>Year</u> | <u>Pos.</u> | <u>Hometown/High School</u> |
|-------------------|-------------------------------|-------------|-------------|-------------------------------|
| Callistus Eziukwu | Grand Valley State University | So. | C | Muskegon, Mich. |
| Courtney James | Grand Valley State University | Sr. | G | Kentwood, Mich./East Kentwood |
| Radayl Richardson | Michigan Tech University | Jr. | G | Detroit, Mich./dePorres |
| Dennis Springs | Ferris State University | Sr. | G | Toledo, Ohio/Scott |
| Marco Volcy | Northern Michigan University | Sr. | F | Montreal, Que./LeBlanc |

GLIAC South Division All-Defensive Team

| <u>Name</u> | <u>School</u> | <u>Year</u> | <u>Pos.</u> | <u>Hometown/High School</u> |
|---------------------|-----------------------|-------------|-------------|---------------------------------|
| Justin Brown | Ashland University | Sr. | C | Columbus, Ohio/West Liberty St. |
| Andy Kubinski | Mercyhurst College | Sr. | G | Erie, Pa./Cathedral Prep |
| Dustin Pfeifer | University of Findlay | Sr. | G | Washington Court House, Ohio |
| Brent Schnipike | University of Findlay | Jr. | C | Ottoville, Ohio |
| Aurimas Truskauskas | Gannon University | Jr. | F | Kalnelis Village, Lithuania |



2005-06 GLIAC FINAL STANDINGS

North Division

| Team | GLIAC | Pct. | Overall | Pct. |
|---------------------|-------|------|---------|------|
| Grand Valley | 16-2 | .889 | 27-4 | .871 |
| Ferris State | 13-5 | .722 | 18-13 | .581 |
| Northern Michigan | 13-5 | .722 | 17-11 | .607 |
| Michigan Tech | 10-8 | .556 | 14-14 | .500 |
| Saginaw Valley | 4-14 | .222 | 9-18 | .333 |
| Lake Superior State | 3-15 | .167 | 6-21 | .222 |
| Northwood | 2-16 | .111 | 7-20 | .259 |

South Division

| Team | GLIAC | Pct. | Overall | Pct. |
|-------------|-------|------|---------|------|
| Findlay | 15-2 | .882 | 25-5 | .833 |
| Ashland | 10-7 | .588 | 19-10 | .655 |
| Mercyhurst | 9-8 | .529 | 19-9 | .679 |
| Hillsdale | 7-10 | .412 | 12-16 | .429 |
| Gannon | 6-11 | .353 | 12-15 | .444 |
| Wayne State | 6-11 | .353 | 11-14 | .440 |

2006 GLIAC Tournament

Quarterfinals

Ferris State 73, Northern Michigan 68

Findlay 76, Hillsdale 62

Ashland 70, Mercyhurst 68

Grand Valley 67, Michigan Tech 46

Semifinals

Ferris State 64, Findlay 62

Grand Valley 90, Ashland 77

Finals

Grand Valley 80, Ferris State 58

GLIAC All-Tournament Team

Callistus Ezuikwu (Grand Valley) - MVP

Dennis Springs (Ferris State)

Kyle Carhart (Grand Valley)

Terrance Shaw (Ferris State)

Courtney James (Grand Valley)

Dustin Pfeifer (Findlay)

2006-07 Hillsdale College Men's Basketball

2005-06 GLIAC STATISTICAL LEADERS

SCORING OFFENSE

| | |
|------------------------|-------------|
| 1. Ashland | 75.8 |
| 2. Findlay | 75.2 |
| 3. Grand Valley | 74.6 |
| 4. Ferris State | 72.7 |
| 5. Northern Michigan | 70.9 |
| 6. Wayne State | 70.2 |
| 7. Hillsdale | 70.1 |
| 8. Lake Superior State | 67.0 |
| 9. Mercyhurst | 66.5 |
| 10. Northwood | 66.4 |
| 11. Saginaw Valley | 65.5 |
| 12. Gannon | 63.6 |
| 13. Michigan Tech | 59.8 |

SCORING DEFENSE

| | |
|-------------------------|-------------|
| 1. Grand Valley | 57.6 |
| 2. Michigan Tech | 59.4 |
| 3. Findlay | 61.2 |
| 4. Mercyhurst | 62.0 |
| 5. Gannon | 64.9 |
| 6. Wayne State | 66.5 |
| 7. Saginaw Valley | 68.1 |
| 8. Northern Michigan | 68.3 |
| 9. Hillsdale | 69.8 |
| 10. Ferris State | 71.1 |
| 11. Northwood | 72.8 |
| 12. Ashland | 73.8 |
| 13. Lake Superior State | 78.3 |

FIELD GOAL PERCENTAGE

| | |
|-------------------------|-------------|
| 1. Findlay | .502 |
| 2. Grand Valley | .491 |
| 3. Wayne State | .472 |
| 4. Northern Michigan | .466 |
| 5. Ashland | .458 |
| 6. Ferris State | .455 |
| 7. Mercyhurst | .454 |
| 8. Northwood | .432 |
| 9. Saginaw Valley | .428 |
| 10. Hillsdale | .424 |
| 11. Lake Superior State | .424 |
| 12. Gannon | .424 |
| 13. Michigan Tech | .417 |

3-POINT FIELD GOAL PERCENTAGE

| | |
|------------------------|-------------|
| 1. Grand Valley | .384 |
| 2. Findlay | .372 |
| 3. Lake Superior State | .366 |
| 4. Hillsdale | .357 |
| 5. Ferris State | .353 |
| 6. Gannon | .351 |
| 7. Northwood | .350 |
| 8. Ashland | .349 |
| 9. Saginaw Valley | .344 |
| 10. Wayne State | .336 |
| 11. Mercyhurst | .331 |
| 12. Michigan Tech | .328 |
| 13. Northern Michigan | .325 |

BLOCKED SHOTS

| | |
|------------------------|-------------|
| 1. Northern Michigan | 4.93 |
| 2. Lake Superior State | 4.19 |
| 3. Grand Valley | 4.06 |
| 4. Mercyhurst | 3.86 |
| 5. Hillsdale | 3.43 |
| 6. Wayne State | 3.04 |
| 7. Michigan Tech | 2.89 |
| 8. Saginaw Valley | 2.89 |
| 9. Ferris State | 2.81 |
| 10. Findlay | 2.60 |
| 11. Northwood | 2.30 |
| 12. Ashland | 2.07 |
| 13. Gannon | 1.78 |

ASSISTS

| | |
|------------------------|--------------|
| 1. Grand Valley | 16.81 |
| 2. Northern Michigan | 15.96 |
| 3. Northwood | 14.70 |
| 4. Ferris State | 14.39 |
| 5. Wayne State | 13.52 |
| 6. Findlay | 13.33 |
| 7. Lake Superior State | 13.19 |
| 8. Ashland | 13.17 |
| 9. Saginaw Valley | 13.07 |
| 10. Hillsdale | 13.07 |
| 11. Gannon | 12.04 |
| 12. Mercyhurst | 11.89 |
| 13. Michigan Tech | 9.96 |

STEALS

| | |
|-------------------------|-------------|
| 1. Findlay | 10.37 |
| 2. Grand Valley | 9.77 |
| 3. Mercyhurst | 9.54 |
| 4. Ferris State | 9.23 |
| 5. Hillsdale | 8.68 |
| 6. Northern Michigan | 7.64 |
| 7. Wayne State | 7.24 |
| 8. Saginaw Valley | 6.78 |
| 9. Northwood | 6.52 |
| 10. Lake Superior State | 6.19 |
| 11. Gannon | 5.59 |
| 12. Michigan Tech | 5.50 |
| 13. Ashland | 5.31 |

ASSIST/TURNOVER RATIO

| | |
|-------------------------|-------------|
| 1. Hillsdale | 1.12 |
| 2. Grand Valley | 1.10 |
| 3. Northwood | 1.06 |
| 4. Northern Michigan | 1.02 |
| 5. Ferris State | 1.00 |
| 6. Findlay | 0.95 |
| 7. Wayne State | 0.86 |
| 8. Saginaw Valley | 0.85 |
| 9. Mercyhurst | 0.83 |
| 10. Lake Superior State | 0.82 |
| 11. Ashland | 0.82 |
| 12. Michigan Tech | 0.82 |
| 13. Gannon | 0.75 |

2006-07 Hillsdale College Men's Basketball

2005-06 GLIAC STATISTICAL LEADERS

SCORING

| | | |
|------------------------|-----------|-------------|
| 1. Ricky Volcy | NM | 20.4 |
| 2. Avi Fogel | MC | 17.4 |
| 3. Dennis Springs | FSU | 16.8 |
| 4. Cory Coe | HC | 16.8 |
| 5. Justin Brown | AU | 16.4 |
| 6. Radayl Richardson | MT | 15.9 |
| 7. Dustin Pfeifer | UF | 15.2 |
| 8. Herb Goliday | WSU | 14.8 |
| 9. Aurimas Truskauskas | GU | 14.5 |
| 10. Kris Krzyminski | WSU | 14.1 |

BLOCKED SHOTS

| | | |
|-----------------------|-----------|-------------|
| 1. Ricky Volcy | NM | 2.54 |
| 2. Callistus Eziukwu | GV | 2.39 |
| 3. Jeff Daisley | MC | 2.04 |
| 4. Tony Gugino | HC | 1.75 |
| 5. Kevin Thornton | SV | 1.48 |
| 6. Curt Ludtke | NU | 1.48 |
| 7. Marco Volcy | NM | 1.21 |
| 8. Vitas Naudziunas | LS | 1.12 |
| 9. Shelby Chaney | GU | 0.96 |
| 10. Mike Rader | LS | 0.93 |

REBOUNDING

| | | |
|------------------------|-----|------|
| 1. Aurimas Truskauskas | GU | 11.6 |
| 2. Justin Brown | AU | 9.9 |
| 3. Shelby Chaney | GU | 9.4 |
| 4. Marco Volcy | NM | 8.0 |
| 5. Ricky Volcy | NM | 7.9 |
| 6. Greg Emmons | AU | 6.8 |
| 7. Terrance Shaw | FSU | 6.8 |
| 8. Jeffery Shanahan | FSU | 6.7 |
| 9. Callistus Eziukwu | GV | 6.5 |
| 10. Curt Ludtke | NU | 6.1 |

ASSISTS

| | | |
|-----------------------|-----------|-------------|
| 1. Dennis Springs | FS | 5.74 |
| 2. Kris Krzyminski | WSU | 5.60 |
| 3. Dustin Pfeifer | UF | 5.30 |
| 4. Courtney James | GV | 4.68 |
| 5. Avi Fogel | MC | 4.14 |
| 6. John Hamood | HC | 4.11 |
| 7. Dave Zeitlin | LS | 4.00 |
| 8. Demondi Johnson | GU | 3.85 |
| 9. Andrae Betts | SV | 3.81 |
| 10. Ricky Volcy | NM | 3.36 |

FIELD GOAL PERCENTAGE

| | | |
|------------------------|-----|------|
| 1. Callistus Eziukwu | GV | .615 |
| 2. Justin Brown | AU | .602 |
| 3. Frank Phillips | UF | .585 |
| 4. Brent Schnipke | UF | .581 |
| 5. Erik Parker | WSU | .567 |
| 6. Marco Volcy | NM | .544 |
| 7. Jeffery Shanahan | FSU | .539 |
| 8. Jeff Daisley | MC | .535 |
| 9. Aurimas Truskauskas | GU | .530 |
| 10. Herb Goliday | WSU | .529 |

STEALS

| | | |
|----------------------|-----|------|
| 1. Dustin Pfeifer | UF | 2.97 |
| 2. Andy Kubinski | MC | 2.78 |
| 3. Dennis Springs | FSU | 2.19 |
| 4. John Hamood | HC | 2.18 |
| 5. Terry Smith | MC | 2.00 |
| 6. Frank Phillips | UF | 1.74 |
| 7. Andrae Betts | SV | 1.73 |
| 8. Jason Jamerson | GV | 1.65 |
| 9. Drew Powell | HC | 1.64 |
| 10. Jeffery Shanahan | FSU | 1.52 |

FREE THROW PERCENTAGE

| | | |
|----------------------|-----------|-------------|
| 1. Cory Coe | HC | .912 |
| 2. Nemanja Kreckovic | NU | .887 |
| 3. Chris Johnston | SV | .833 |
| 4. Avi Fogel | MC | .813 |
| 5. Kris Krzyminski | WSU | .812 |
| 6. Andrae Betts | SV | .809 |
| 7. Brett Bartlett | AU | .806 |
| 8. Terry Smith | MC | .805 |
| 9. Erik Parker | WSU | .794 |
| 10. Dan Redder | GV | .775 |

ASSIST/TURNOVER RATIO

| | | |
|-----------------------|-----------|-------------|
| 1. John Hamood | HC | 2.88 |
| 2. Courtney James | GV | 2.54 |
| 3. Dennis Springs | FSU | 1.89 |
| 4. Dustin Pfeifer | UF | 1.71 |
| 5. Dave Zeitlin | LS | 1.69 |
| 6. Kris Krzyminski | WSU | 1.65 |
| 7. Demondi Johnson | GU | 1.55 |
| 8. Ricky Volcy | NM | 1.45 |
| 9. Avi Fogel | MC | 1.41 |
| 10. Andrae Betts | SV | 1.22 |

2006-07 Hillsdale College Men's Basketball

GLIAC MEN'S BASKETBALL POSTSEASON AWARD WINNERS

COACH OF THE YEAR

| | | |
|----------------|-----------------|-------------------|
| 2005-06 | Ron Niekamp | Findlay |
| 2004-05 | Ron Niekamp | Findlay |
| 2003-04 | Kevin Luke | Michigan Tech |
| 2002-03 | Ron Niekamp | Findlay |
| 2001-02 | Kevin Luke | Michigan Tech |
| 2000-01 | Ed Douma | Hillsdale |
| 1999-2000 | Jerry Slocum | Gannon |
| 1998-99 | Ron Hammye | Wayne St. |
| 1997-98 | Kevin Luke | Michigan Tech |
| 1996-97 | Dean Lockwood | Northwood |
| 1995-96 | Terry Smith | Lake Superior St. |
| 1994-95 | Kevin Luke | Michigan Tech |
| 1993-94 | Ron Hammye | Wayne St. |
| 1992-93 | Dean Ellis | N. Michigan |
| 1991-92 | Ron Hammye | Wayne St. |
| 1990-91 | N/A | |

PLAYER OF THE YEAR

| | | |
|-----------|----------------|-------------------|
| 2005-06 | Dustin Pfeifer | Findlay |
| 2004-05 | Josh Buettner | Michigan Tech |
| 2003-04 | Josh Buettner | Michigan Tech |
| 2002-03 | Matt Cameron | Michigan Tech |
| 2001-02 | Matt Cameron | Michigan Tech |
| 2000-01 | Javar Cheatham | Gannon |
| 1999-2000 | Cory Brathol | Wayne St. |
| 1998-99 | Tony Goins | Wayne St. |
| 1997-98 | Troy Niesmith | Gannon |
| 1996-97 | Joe Moddermann | Grand Valley |
| 1995-96 | Eric Menk | Lake Superior St. |
| 1994-95 | N/A | |
| 1993-94 | Michael Aaron | Wayne St. |
| 1992-93 | N/A | |
| 1991-92 | Charlie Mandt | Grand Valley |
| 1990-91 | N/A | |



Great Lakes Intercollegiate Athletic Conference



WHEN YOU CAN'T BE THERE

The voices of the
Chargers:
Andy Brown,
Dan Bisher and
Jim Eckhardt

**Listen to WCSR all season for
Hillsdale College men's and
women's basketball action.**

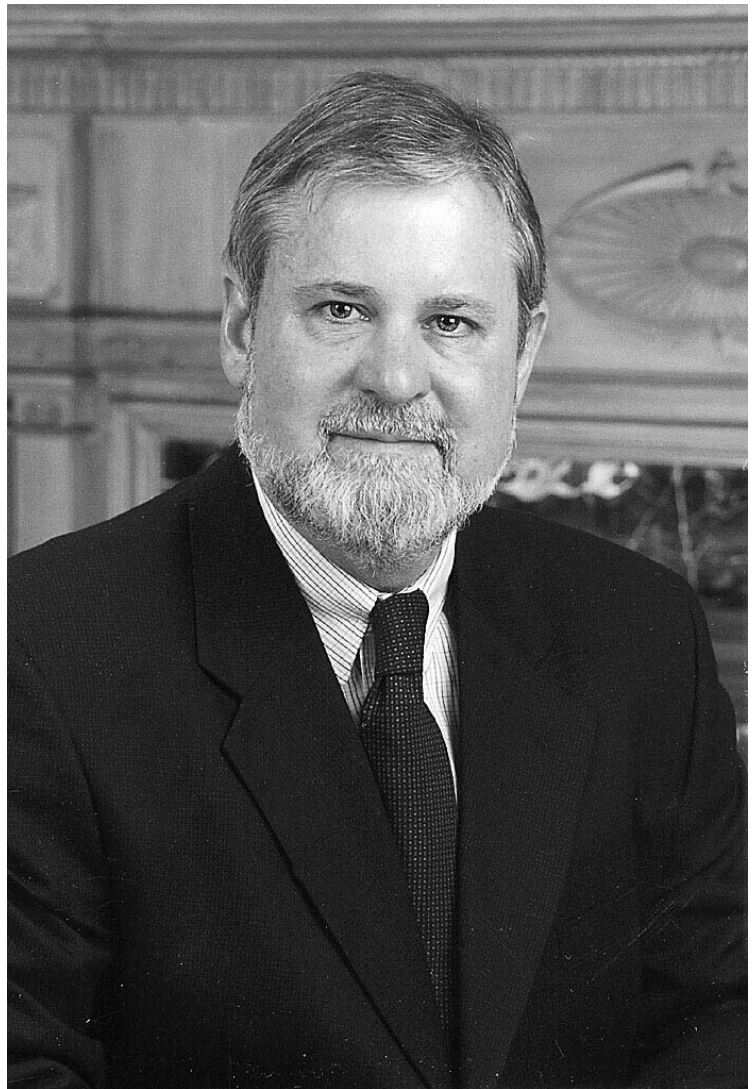
DR. LARRY ARNN
President

Dr. Larry P. Arnn, the 12th president of Hillsdale College, received his B.A. in Political Science and Accounting in 1974 from Arkansas State University, graduating with the highest distinction. He studied at the Claremont Graduate School and received his M.A. in Government in 1976, and his Ph.D. in Government in 1985. He studied in England from 1977 to 1980, first as a research student in International History at the London School of Economics and then in Modern History at Worcester College, Oxford University. He has received numerous fellowships and awards, among them a two-year fellowship from the Alcoa Foundation in 1972; a Richard M. Weaver Fellowship in 1975; a Rotary International Fellowship in 1977; and Earhart Foundation Fellowships in 1978, 1979, and 1980; and a Winston S. Churchill Association Fellowship from 1977 to 1980.

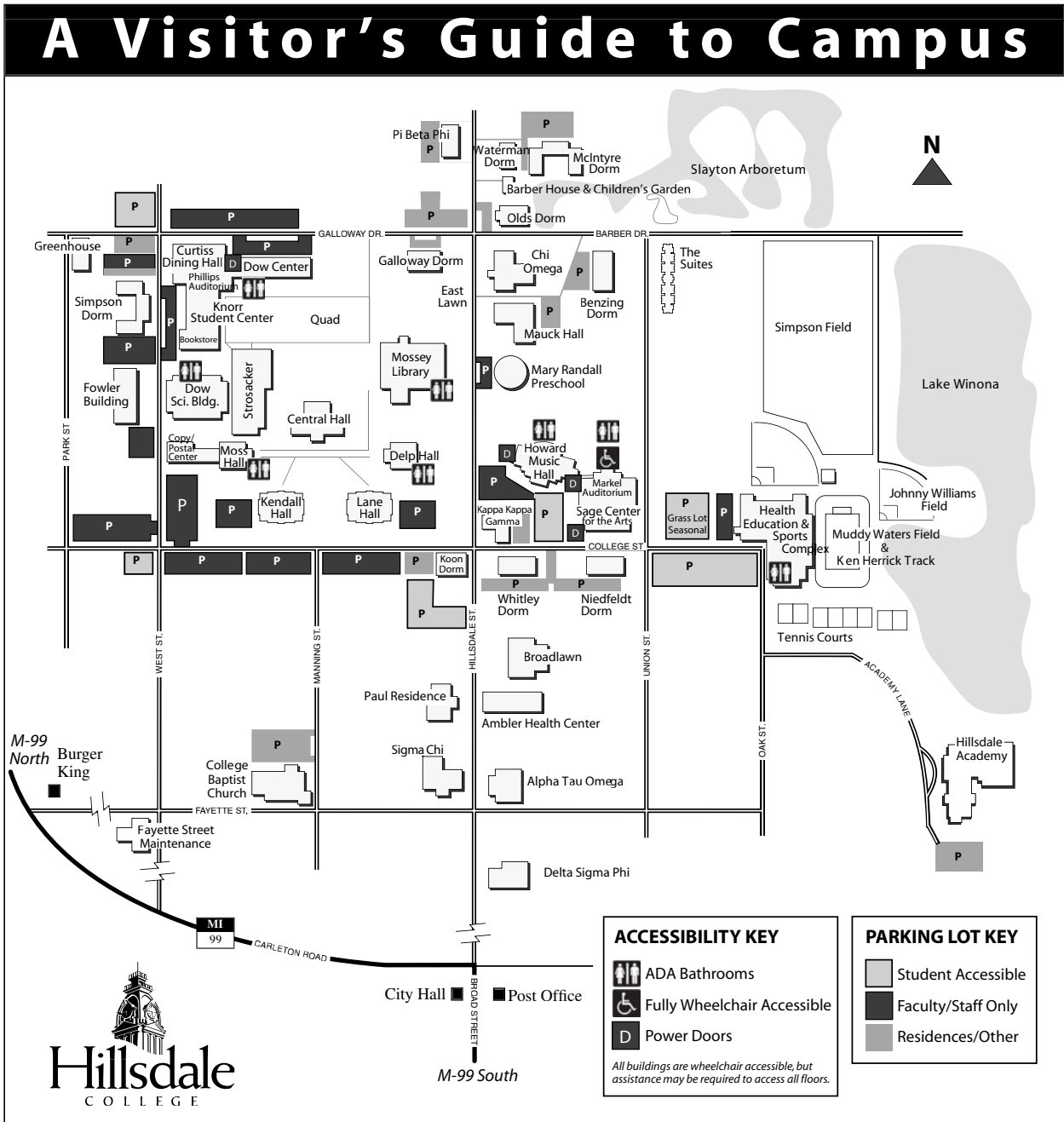
While in England, Dr. Arnn served as Director of Research for Mr. Martin, now Sir Martin, Gilbert of Merton College, Oxford. Sir Martin is the official biographer of Sir Winston Churchill. Dr. Arnn returned to the United States in 1980 to become an editor for *Public Research, Syndicated*. In 1985, he became president of the Claremont Institute, a public policy research institution based in Southern California.

Published widely in many national newspapers, magazines and periodicals on issues of public policy and political theory, Dr. Arnn is a director of the Henry Salvatori Center of Claremont McKenna College, of the Americans Against Discrimination and Preferences, of the Center for Individual Rights, of St. Mark's Episcopal School, and of the Claremont Institute. He served on the Board of Advisors for Landmark Legal Foundation, and on the Academic Advisory Board of the Free Enterprise Institute and of the International Churchill Society. He recently was appointed to the Congressional Policy Advisory Board which provides counsel to the House Republican Policy Committee. He is a member of the American Political Science Association, Pi Sigma Alpha, the Mont Pelerin Society, the International Churchill Society and the Philanthropy Roundtable.

Hillsdale's new president was also the Founding Chairman of the California Civil Rights Initiative, or Proposition 209 on the November 1996 ballot. He and his wife, Penelope, have three children, Henry, Katy and Alice.



2006-07 Hillsdale College Men's Basketball



Campus Information

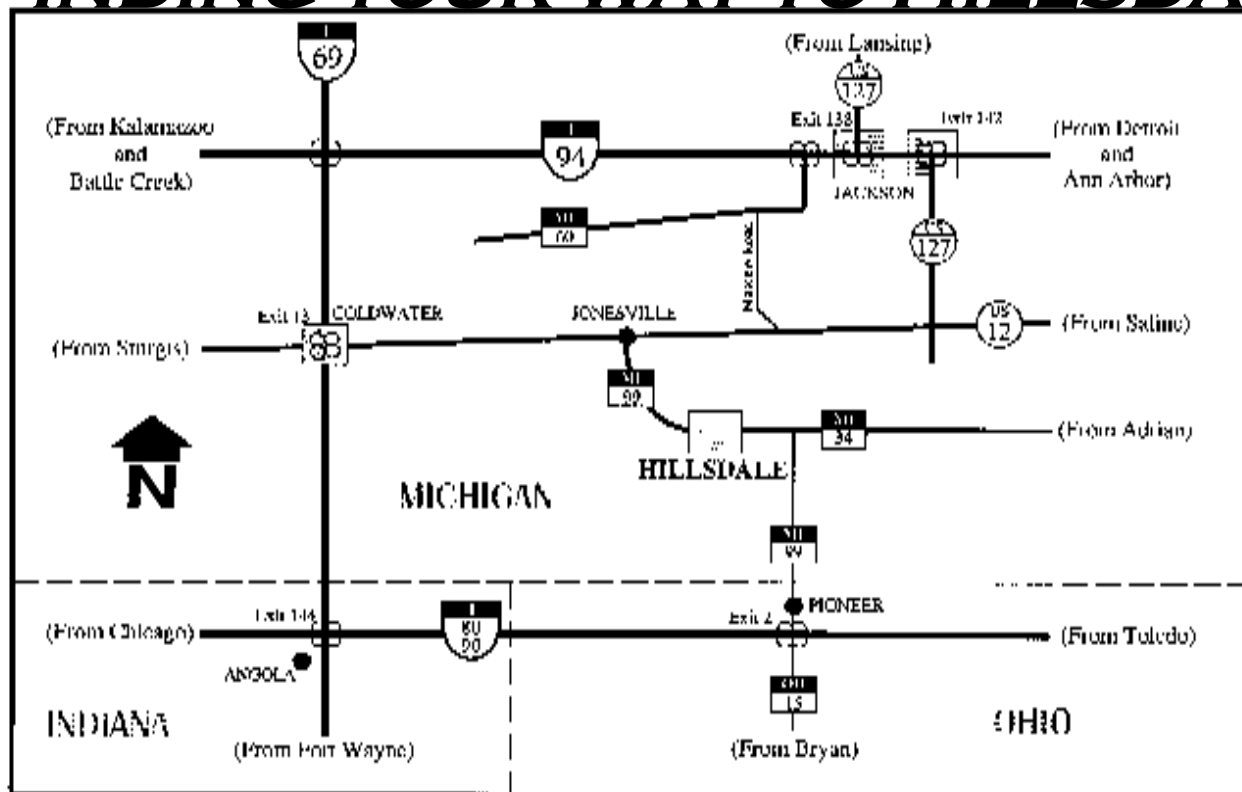
- General information.....(517) 437-7341
- Student admissions.....(517) 607-2327
- Hillsdale College Bookstore.....(517) 607-2266
- Gift and Estate Planning(800) 334-8904
- On- and off-campus lecture series, books and publications or (800) 437-2268
- Professional seminars for managers and executives.....(517) 437-3311
- On-campus accommodations and dining(517) 437-3311



2006-07 Hillsdale College Men's Basketball



FINDING YOUR WAY TO HILLSDALE



ACCOMMODATIONS for your stay at Hillsdale College can be found at many of the hotels, motels, and inns in the local area: (area code 517 unless indicated)

Hillsdale

| | |
|----------------------------------------|----------|
| Dow Conference Center (on campus)..... | 437-3311 |
| Days Inn | 439-3297 |
| Hillsdale Motel | 437-3389 |

Jonesville (5 min. away)

| | |
|----------------------------|----------|
| † Horse And Carriage | 849-2732 |
| * Munro House | 849-9292 |
| Pinecrest Motel | 849-2147 |

Pittsford (15 min. away)

| | |
|-------------------------------|----------|
| * The Rocking Horse Inn | 523-3826 |
|-------------------------------|----------|

Coldwater (25 min. away)

| | |
|--------------------------|----------|
| * Chicago Pike Inn | 279-8744 |
| Econo Lodge | 278-4501 |
| Quality Inn | 278-3017 |
| Super 8 | 278-8333 |

Jackson (40 min. away)

| | |
|--------------------------|----------|
| Baymont Inn | 789-6000 |
| The Claddagh | 768-1000 |
| Country Hearth Inn | 783-6404 |
| Fairfield Inn | 784-7877 |
| Holiday Inn | 783-2681 |
| Super 8 | 788-8780 |

Montpelier/Exit 2 (30 min. away)

| | |
|---------------------------|--------------|
| Ramada Inn & Suites | 419/485-5555 |
|---------------------------|--------------|

† Bed and breakfast

FROM DETROIT (Approximately 90 miles west of Hillsdale): Take I-94 West to U.S. 127 South (Exit 142). Proceed about 20 miles to the second stoplight and turn right on U.S. 12 West. Take U.S. 12 West about 16 miles to Jonesville. In Jonesville, turn right onto M-99 South. Proceed about four miles to the second stoplight in Hillsdale. Turn left onto Payette Street. Go to the flashing stoplight on Hillsdale Street and turn left. Follow the blue signs to campus.

FROM TOLEDO: Take I-80/90 West to Ohio State Route 15 (Exit 3) and proceed north. The road number will change to M-99 at the Michigan border, and farther north will appear to end at a flashing red light. Turn left, and continue on M-99 to Hillsdale. Proceed straight through all downtown traffic lights (3) and follow the blue signs to campus.

FROM CHICAGO (Approximately 200 miles east of Hillsdale): Take I-80/90 East to Angola, Indiana (Exit 144). Follow I-69 North about ten miles to Coldwater (Exit 13) and turn left onto U.S. 12 East. You will proceed straight through Quincy and Allou. In Jonesville, turn right onto M-99 South. Proceed about four miles to the second stoplight in Hillsdale. Turn left, onto Payette Street. Go to the flashing stoplight on Hillsdale Street and turn left. Follow the blue signs to campus.



Hillsdale
COLLEGE

Produced by Hillsdale College Public Relations Office, May 2007

2006-07 Hillsdale College Men's Basketball Schedule

| Day Date | Opponent | Location | Time |
|-----------------|-------------------------------------|-------------------------|-------------|
| Sun. Nov. 5 | at University of Akron* | Akron, Ohio | 2 p.m. |
| Fri. Nov. 10 | at Marquette University* | Milwaukee, Wisc. | 7 p.m. |
| Sat. Nov. 18 | at Siena Heights | Adrian, Mich. | 7:30 p.m. |
| Tue. Nov. 21 | at University of Indianapolis | Indianapolis, Ind. | 7:30 p.m. |
| Sat. Nov. 25 | vs. Saginaw Valley State University | Hillsdale, Mich. | 3 p.m. |
| Thu. Nov. 30 | vs. Mercyhurst College | Hillsdale, Mich. | 8 p.m. |
| Sat. Dec. 1 | vs. Gannon University | Hillsdale, Mich. | 3 p.m. |
| Sat. Dec. 9 | at Wayne State University | Detroit, Mich. | 3 p.m. |
| Fri. Dec. 15 | vs. St. Francis (Ill.) | Hillsdale, Mich. | 7 p.m. |
| Sat. Dec. 16 | vs. Siena Heights | Hillsdale, Mich. | 4 p.m. |
| Tue. Dec. 19 | vs. Drury | Nassau, Bahamas | TBA |
| Wed. Dec. 20 | vs. Winona State OR Wingate | Nassau, Bahamas | TBA |
| Thu. Dec. 28 | at Tiffin University | Tiffin, Ohio | 7:30 p.m. |
| Sat. Dec. 30 | at Northwood University | Midland, Mich. | 3 p.m. |
| Thu. Jan. 4 | at Saginaw Valley State University | Saginaw, Mich. | 8 p.m. |
| Sat. Jan. 6 | at Ferris State University | Big Rapids, Mich. | 3 p.m. |
| Thu. Jan. 11 | at University of Findlay | Findlay, Ohio | 8 p.m. |
| Sat. Jan. 13 | at Ashland University | Ashland, Ohio | 3 p.m. |
| Thu. Jan. 18 | vs. Northern Michigan University | Hillsdale, Mich. | 8 p.m. |
| Sat. Jan. 20 | vs. Michigan Tech University | Hillsdale, Mich. | 3 p.m. |
| Thu. Jan. 25 | at Lake Superior State University | Sault Ste. Marie, Mich. | 7:30 p.m. |
| Thu. Feb. 1 | vs. Ashland University | Hillsdale, Mich. | 8 p.m. |
| Sat. Feb. 3 | vs. University of Findlay | Hillsdale, Mich. | 3 p.m. |
| Thu. Feb. 8 | at Gannon University | Erie, Pa. | 7:30 p.m. |
| Sat. Feb. 10 | at Mercyhurst College | Erie, Pa. | 3 p.m. |
| Wed. Feb. 14 | vs. Northwood University | Hillsdale, Mich. | 8 p.m. |
| Sat. Feb. 17 | at Grand Valley State University | Allendale, Mich. | 3 p.m. |
| Sat. Feb. 24 | vs. Wayne State University | Hillsdale, Mich. | 3 p.m. |

* - exhibition game